

# RNAV (GPS) RWY 34

FAYETTEVILLE/ DRAKE FIELD (F'YV)

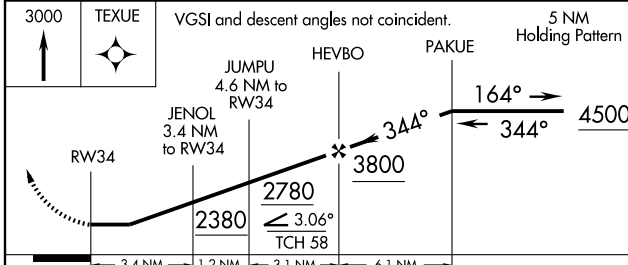
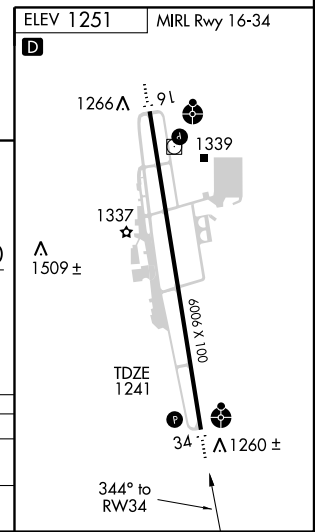
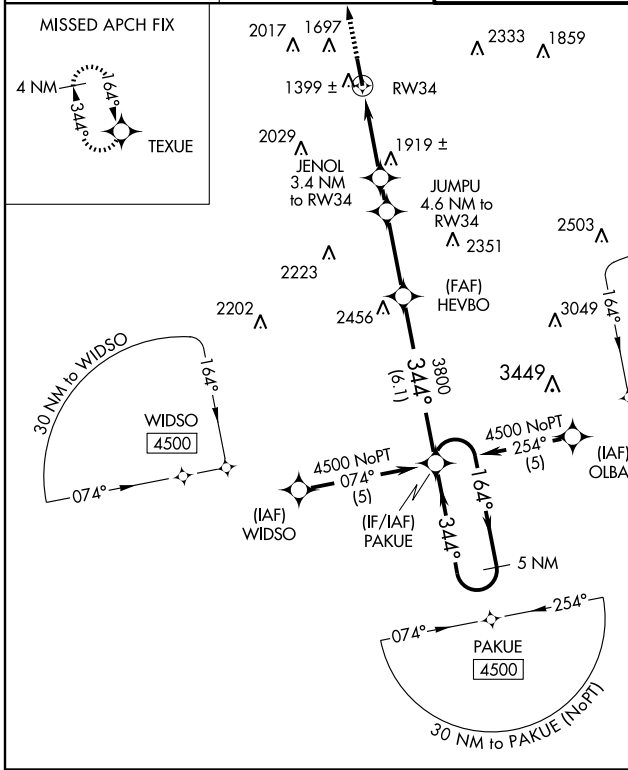
APP CRS	Rwy Idg	<b>6006</b>
<b>344°</b>	TDZE	<b>1241</b>
	Apt Elev	<b>1251</b>

**⚠** Inoperative table does not apply. DME/DME RNP-0.3 NA. Visibility reduction by helicopters NA. Circling NA East Rwy 16-34. When local altimeter setting not received, use Springdale altimeter setting and increase all MDA 40 feet and ASR and circling Cat C visibility ¼ mile.

ODALS

MISSED APPROACH: Climb to 3000 direct TEXUE and hold.

ATIS <b>119.575</b>	RAZORBACK APP CON* <b>121.0 244.57</b>	DRAKE TOWER* <b>128.0 (CTAF) 0 371.9</b>	GND CON <b>121.8</b>
------------------------	---	---	-------------------------



CATEGORY	A	B	C	D
RNAV MDA	2180-1¼	939 (1000-1¼)	2180-2¾ 939 (1000-2¾)	2180-3 939 (1000-3)
CIRCLING	2180-1¼	929 (1000-1¼)	2180-2¾ 929 (1000-2¾)	2260-3 1009 (1100-3)

SC-1, 19 NOV 2009 to 17 DEC 2009

SC-1, 19 NOV 2009 to 17 DEC 2009