

FAYETTEVILLE, ARKANSAS

AL-728 (FAA)

VOR/DME-B

FAYETTEVILLE/ DRAKE FIELD (FYV)

VOR/DME DAK 108.8 Chan 25	APP CRS 325°	Rwy Idg TDZE Apt Elev	N/A N/A 1251
--	------------------------	-----------------------------	---------------------------



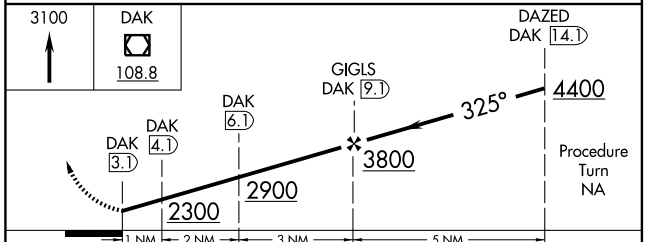
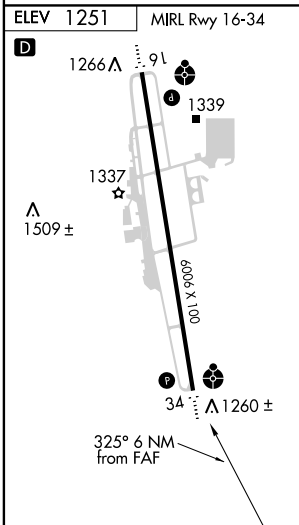
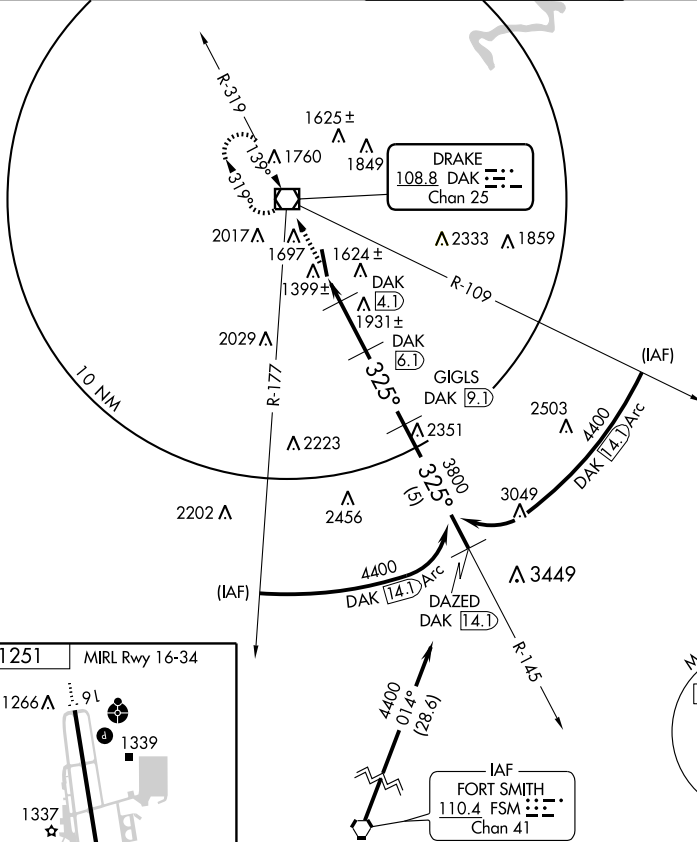
Circling not authorized east of Rwy 16-34.

MISSED APPROACH: Climb to 3100 direct DAK VOR/DME and hold.

ATIS 119.575	RAZORBACK APP CON* 121.0 244.57	DRAKE TOWER* 128.0 (CTAF) 0 371.9	GND CON 121.8
------------------------	---	---	-------------------------

SC-1, 19 NOV 2009 to 17 DEC 2009

SC-1, 19 NOV 2009 to 17 DEC 2009



CATEGORY	A	B	C	D
CIRCLING	2000-1 749 (800-1)	2000-1¼ 749 (800-1¼)	2000-2¼ 749 (800-2¼)	2300-3 1049 (1100-3)

FAYETTEVILLE, ARKANSAS
Orig-B 09015

36° 00' N-94° 10' W

FAYETTEVILLE/ DRAKE FIELD (FYV)
VOR/DME-B