

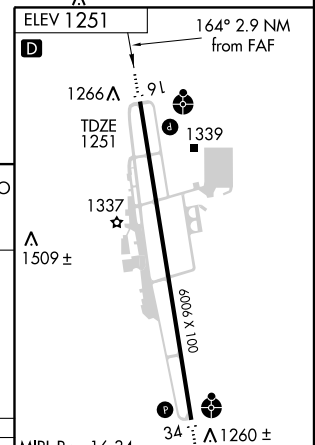
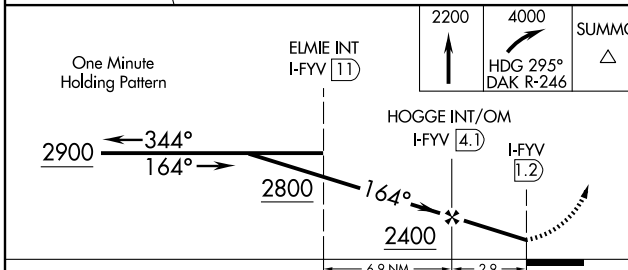
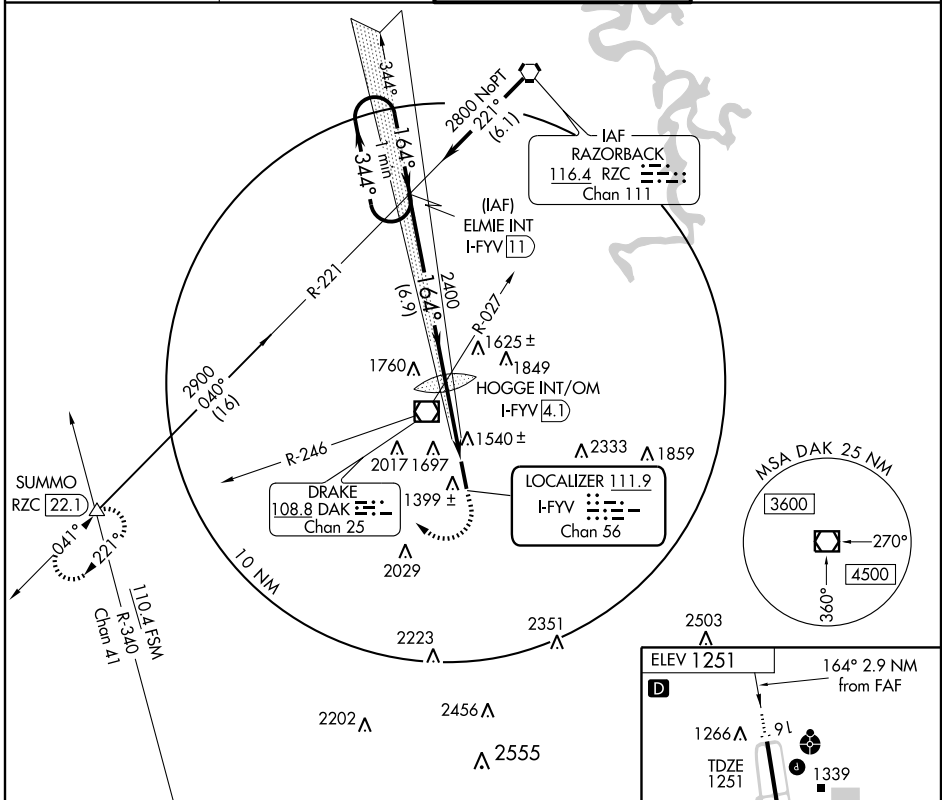
LOC RWY 16

FAYETTEVILLE/ DRAKE FIELD (FYV)

LOC/DME I-FYV 111.9 Chan 56	APP CRS 164°	Rwy Idg 6006 TDZE 1251 Apt Elev 1251
---	------------------------	---

<p>ASR Circling not authorized east of Rwy 16-34. Inoperative table does not apply.</p>	<p>ODALS MISSED APPROACH: Climb to 2200 then climbing right turn to 4000 via heading 295° and DAK R-246 to SUMMO Int and hold.</p>
--	---

<p>ATIS 119.575</p>	<p>RAZORBACK APP CON * 121.0 244.57</p>	<p>DRAKE TOWER * 128.0 (CTAF) 0 371.9</p>	<p>GND CON 121.8</p>
---------------------------------------	---	---	--



CATEGORY	A	B	C	D	MIRL Rwy 16-34												
S-16	1760-1	509 (600-1)	1760-1½	509 (600-1½)	FAF to MAP 2.9 NM												
CIRCLING	2000-1 749 (800-1)	2000-1¼ 749 (800-1¼)	2000-2¼ 749 (800-2¼)	2300-3 1049 (1100-3)	<table border="1"> <tr> <td>Knots</td> <td>60</td> <td>90</td> <td>120</td> <td>150</td> <td>180</td> </tr> <tr> <td>Min:Sec</td> <td>2:54</td> <td>1:56</td> <td>1:27</td> <td>1:10</td> <td>0:58</td> </tr> </table>	Knots	60	90	120	150	180	Min:Sec	2:54	1:56	1:27	1:10	0:58
Knots	60	90	120	150	180												
Min:Sec	2:54	1:56	1:27	1:10	0:58												

SC-1, 19 NOV 2009 to 17 DEC 2009

SC-1, 19 NOV 2009 to 17 DEC 2009