

LDA/DME RWY 34

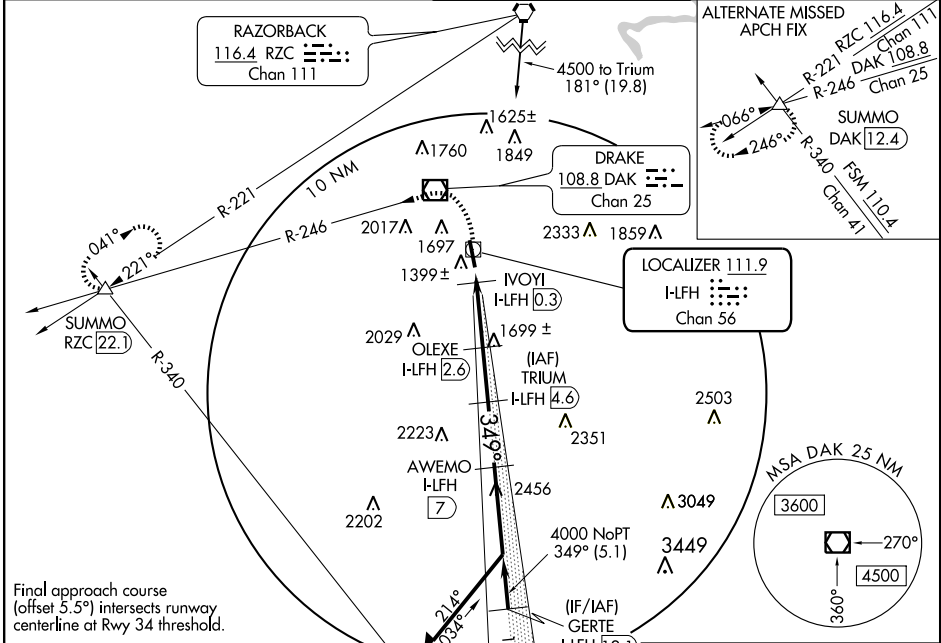
FAYETTEVILLE/DRAKE FIELD (F'YV)

LOC/DME I-LFH 111.9 Chan 56	APP CRS 349°	Rwy Idg TDZE Apt Elev	6006 1241 1251
--	------------------------	-----------------------------	---

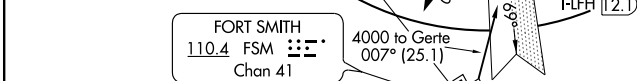
Glideslope provided by standard glideslope equipment. Circling NA east of Rwy 16-34. Inoperative table does not apply. Visibility reduction by helicopters NA. When local altimeter setting not received, use Springdale altimeter setting and increase all DA/MDA 40 feet.

ODALS MISSED APPROACH: Climb to 2200 then climbing left turn to 4000 via heading 245° and DAK R-246 to SUMMO Int and hold.

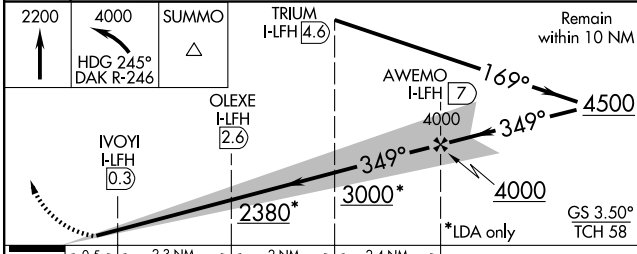
ATIS 119.575	RAZORBACK APP CON* 121.0 244.57	DRAKE TOWER* 128.0 (CTAF) 0 371.9	GND CON 121.8
------------------------	---	---	-------------------------



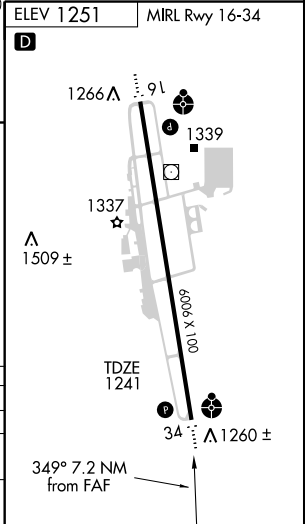
Final approach course (offset 5.5°) intersects runway centerline at Rwy 34 threshold.



LDA/GLIDESLOPE



CATEGORY	A	B	C	D
S-LDA/GS 34	1589-1¼ 348 (400-1¼)			NA
S-LDA 34	2000-1¼ 759 (800-1¼)	2000-1½ 759 (800-1½)	2000-2½ 759 (800-2½)	NA
CIRCLING	2000-1¼ 749 (800-1¼)	2000-1½ 749 (800-1½)	2000-2½ 749 (800-2½)	NA



SC-1, 11 MAR 2010 to 08 APR 2010

SC-1, 11 MAR 2010 to 08 APR 2010