

ILS or LOC RWY 31

DALLAS EXECUTIVE (R.B.D)

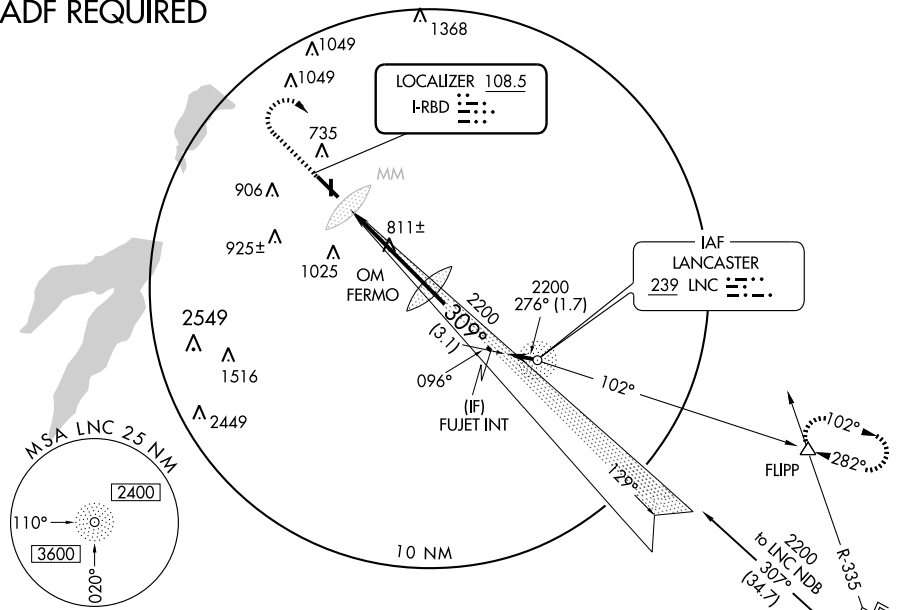
LOC I-RBD 108.5	APP CRS 309°	Rwy Idg 6451
		TDZE 658
		Apt Elev 660

⚠ When local altimeter setting not received use Dallas Love Field altimeter setting and increase DA to 906 feet and all MDA 60 feet, increase S-LOC 31 Cat C visibility ¼ mile.

⚠ MISSED APPROACH: Climb to 1200 then climbing right turn to 2400 direct LNC NDB and via bearing 102° from LNC NDB to FLUPP INT and hold.

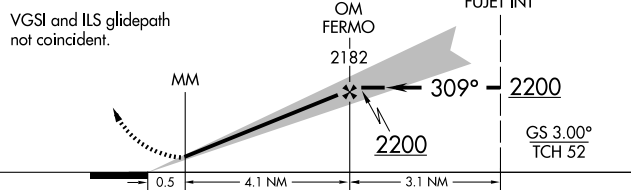
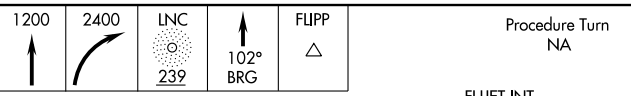
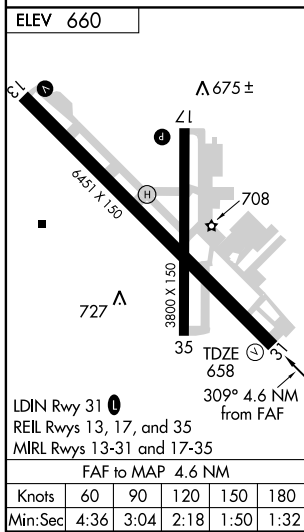
ATIS 126.35	REGIONAL APP CON 125.2 343.65	EXECUTIVE TOWER* 127.25 (CTAF) 335.6	GND CON 119.475	CLNC DEL 118,625	UNICOM 122.95
-----------------------	---	--	---------------------------	----------------------------	-------------------------

ADF REQUIRED



SC-2, 19 NOV 2009 to 17 DEC 2009

SC-2, 19 NOV 2009 to 17 DEC 2009



CATEGORY	A	B	C	D
S-ILS 31	858-¾ 200 (200-¾)			
S-LOC 31	1100-1 442 (500-1)	1100-1½ 442 (500-1½)	1100-1½ 442 (500-1½)	1100-1½ 442 (500-1½)
CIRCLING	1160-1 500 (500-1)	1160-1½ 500 (500-1½)	1340-2½ 680 (700-2½)	1340-2½ 680 (700-2½)