

# RNAV (GPS) RWY 17

DALLAS EXECUTIVE (R.B.D)

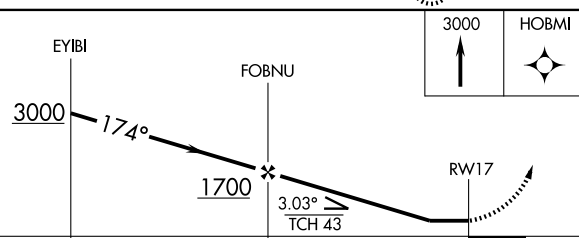
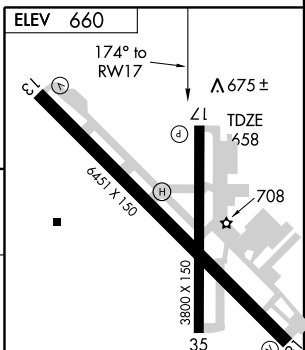
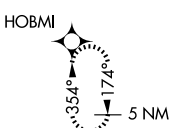
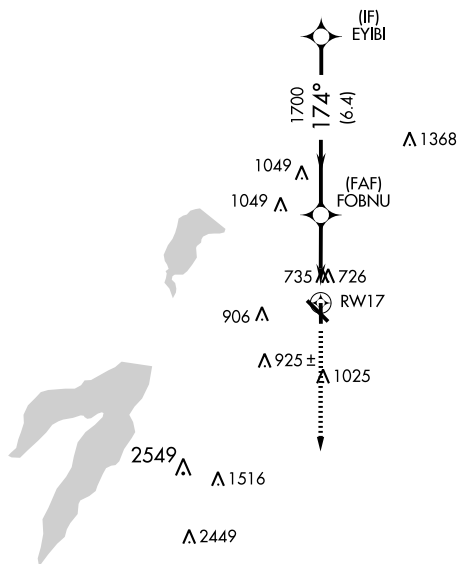
APP CRS <b>174°</b>	Rwy Idg <b>3801</b>
	TDZE <b>658</b>
	Apt Elev <b>660</b>

⚠ If local altimeter setting not received, use Dallas-Love Field altimeter setting and increase all MDAs 60 feet.  
 ⚠ DME/DME RNP-0.3 NA.

MISSED APPROACH: Climb to 3000 direct HOBMI and hold.

ATIS <b>126.35</b>	REGIONAL APP CON <b>125.2 343.65</b>	EXECUTIVE TOWER ★ <b>127.25 (CTAF) 0 335.6</b>	GND CON <b>119.475</b>	CLNC DEL <b>118.625</b>	UNICOM <b>122.95</b>
-----------------------	---	---	---------------------------	----------------------------	-------------------------

## RADAR REQUIRED



CATEGORY	A	B	C	D
RNAV MDA	1100-1	442 (500-1)	1100-1¼ 442 (500-1¼)	1100-1½ 442 (500-1½)
CIRCLING	1160-1	500 (500-1)	1160-1½ 500 (500-1½)	1340-2¼ 680 (700-2¼)

LDIN Rwy 31  
 REIL Rwys 13, 17, and 35  
 MRL Rwys 13-31 and 17-35

SC-2, 19 NOV 2009 to 17 DEC 2009

SC-2, 19 NOV 2009 to 17 DEC 2009