

# RNAV (GPS) RWY 35

DALLAS EXECUTIVE (R.B.D)

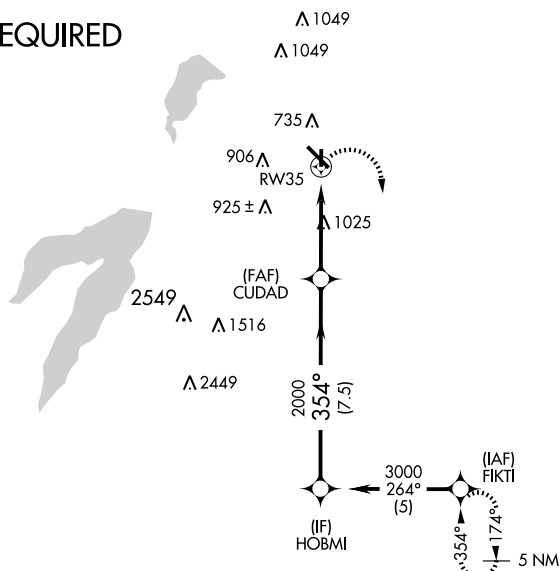
APP CRS <b>354°</b>	Rwy Idg <b>3801</b>
	TDZE <b>659</b>
	Apt Elev <b>660</b>

**⚠** If local altimeter setting not received, use Dallas-Love Field altimeter setting and increase all MDAs 60 feet. VDP NA when using Dallas-Love Field altimeter setting. DME/DME RNP 0.3 NA.

**MISSED APPROACH:** Climbing right turn to 3000 direct FIKTI and hold.

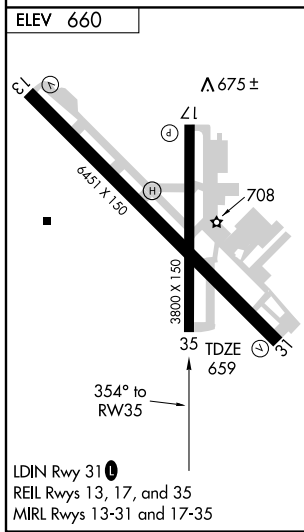
ATIS <b>126.35</b>	REGIONAL APP CON <b>125.2 343.65</b>	EXECUTIVE TOWER ★ <b>127.25 (CTAF) 0 335.6</b>	GND CON <b>119.475</b>	CLNC DEL <b>118.625</b>	UNICOM <b>122.95</b>
-----------------------	---	---	---------------------------	----------------------------	-------------------------

## RADAR REQUIRED

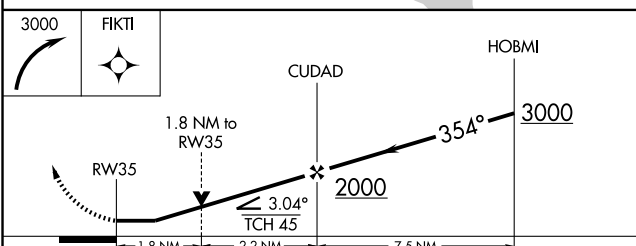


SC-2, 19 NOV 2009 to 17 DEC 2009

SC-2, 19 NOV 2009 to 17 DEC 2009



LDIN Rwy 31  
REIL Rws 13, 17, and 35  
MIRL Rws 13-31 and 17-35



CATEGORY	A	B	C	D
LNAV MDA	1280-1 621 (700-1)		1280-1¾ 621 (700-1¾)	1280-2 621 (700-2)
CIRCLING	1280-1 620 (700-1)		1280-1¾ 620 (700-1¾)	1340-2¼ 680 (700-2¼)