

VOR RWY 31

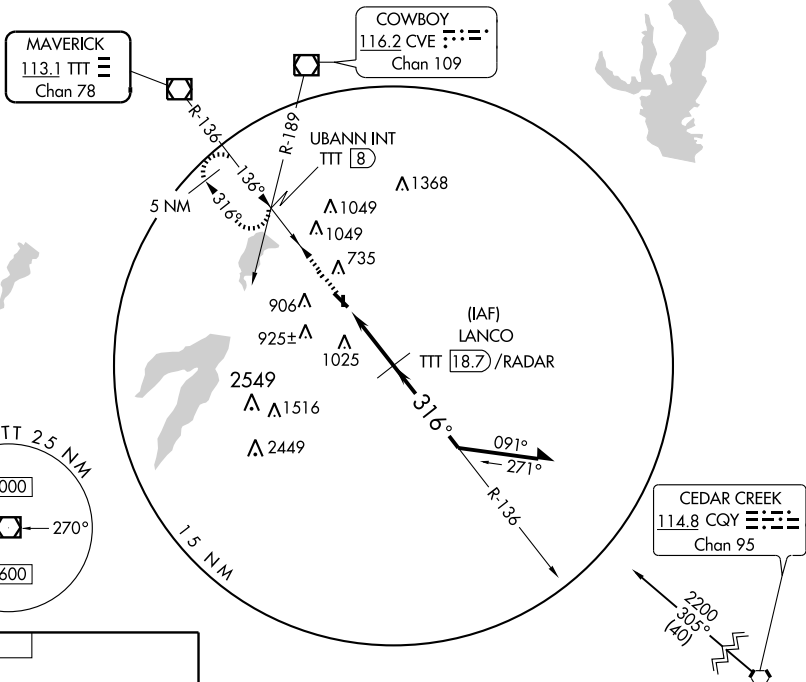
DALLAS EXECUTIVE (R.B.D)

VOR/DME TTT 113.1 Chan 78	APP CRS 316°	Rwy Idg TDZE 658 Apt Elev 660
-----------------------------------------------	------------------------	---------------------------------------------------

▼ If local altimeter setting not received, use Dallas-Love Field altimeter setting and increase all MDAs 60 feet. VDP NA when using Dallas-Love Field altimeter setting. Radar or DME required.

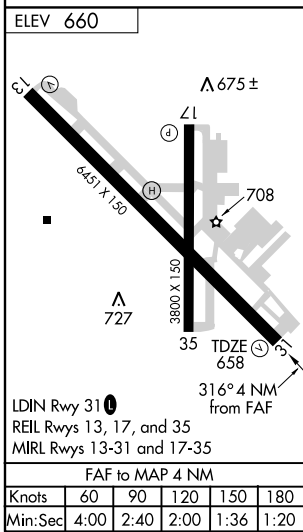
MISSED APPROACH: Climb to 2500 via TTT R-136 to UBANN INT/TTT 8 DME and hold.

ATIS 126.35	REGIONAL APP CON 125.2 343.65	EXECUTIVE TOWER ★ 127.25 (CTAF) 335.6	GND CON 119.475	CLNC DEL 118.625	UNICOM 122.95
-----------------------	-----------------------------------------	--------------------------------------------------------	---------------------------	----------------------------	-------------------------

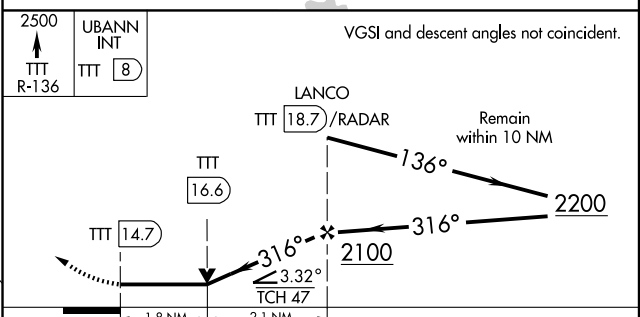


SC-2, 19 NOV 2009 to 17 DEC 2009

SC-2, 19 NOV 2009 to 17 DEC 2009



RADAR or DME REQUIRED



CATEGORY	A	B	C	D
S- 31	1280-1 622 (700-1)		1280-1¾ 622 (700-1¾)	1280-2 622 (700-2)
CIRCLING	1280-1 620 (700-1)		1280-1¾ 620 (700-1¾)	1340-2¼ 680 (700-2¼)