

VOR/DME CVE 116.2 Chan 109	APP CRS 165°	Rwy Idg TDZE Apt Elev	3801 658 660
--	------------------------	-----------------------------	---

VOR/DME RWY 17

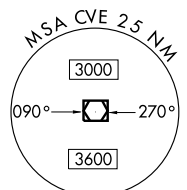
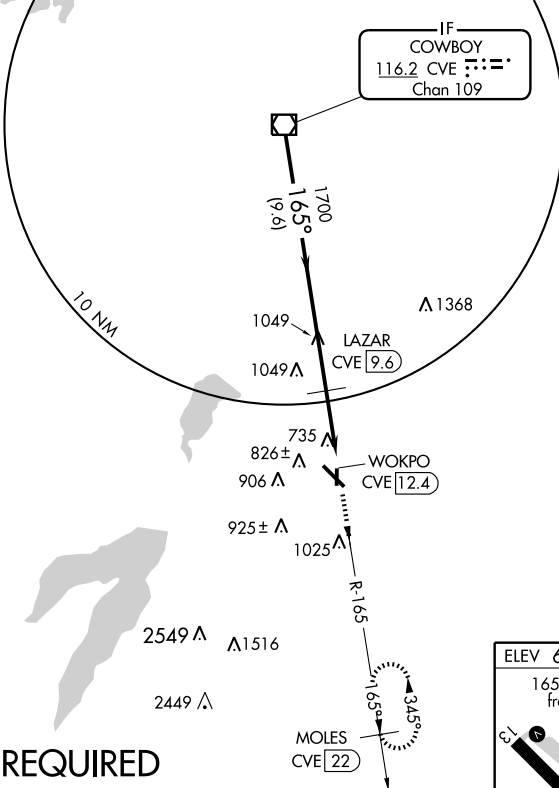
DALLAS EXECUTIVE (RBD)



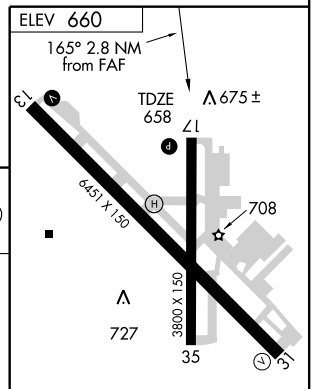
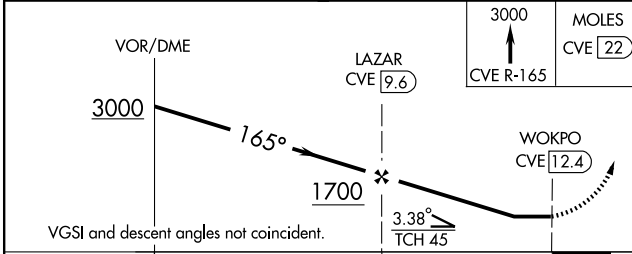
If local altimeter setting not received, use Dallas-Love Field altimeter setting and increase all MDAs 60 feet.

MISSED APPROACH: Climb to 3000 via CVE R-165 to MOLES 22 DME and hold.

ATIS 126.35	REGIONAL APP CON 125.2 343.65	EXECUTIVE TOWER * 127.25 (CTAF) 0 335.6	GND CON 119.475	CLNC DEL 118.625	UNICOM 122.95
-----------------------	---	---	---------------------------	----------------------------	-------------------------



RADAR REQUIRED



LDIN Rwy 31
REIL Rws 13, 17, and 35
MRL Rws 13-31 and 17-35

CATEGORY	A	B	C	D
S-17	1080-1	422 (500-1)	1080-1¼	422 (500-1¼)
CIRCLING	1160-1	500 (500-1)	1160-1½	1340-2¼
			500 (500-1½)	680 (700-2¼)

Knots	60	90	120	150	180
Min:Sec					

SC-2, 19 NOV 2009 to 17 DEC 2009

SC-2, 19 NOV 2009 to 17 DEC 2009