

| | | |
|---|------------------------|---|
| LOC/DME I-ADS 110.1 Chan 38 | APP CRS 155° | Rwy ldg 6223 TDZE 643 Apt Elev 644 |
|---|------------------------|---|

ILS or LOC RWY 15

DALLAS/ADDISON (ADS)

- When control tower closed, obtain local altimeter setting on UNICOM; when not received, use Dallas-Love Field altimeter setting and increase all DAs 39 feet and MDAs 40 feet.
- Inoperative table does not apply to S-ILS 15 all Cats, S-LOC 15 Cats A, B & C. For inoperative MALSRS, increase S-LOC 15 Cat D visibility to 1/4. Visibility reduction by helicopters NA.

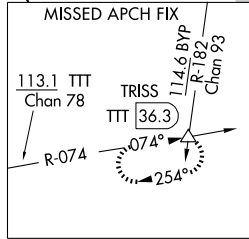
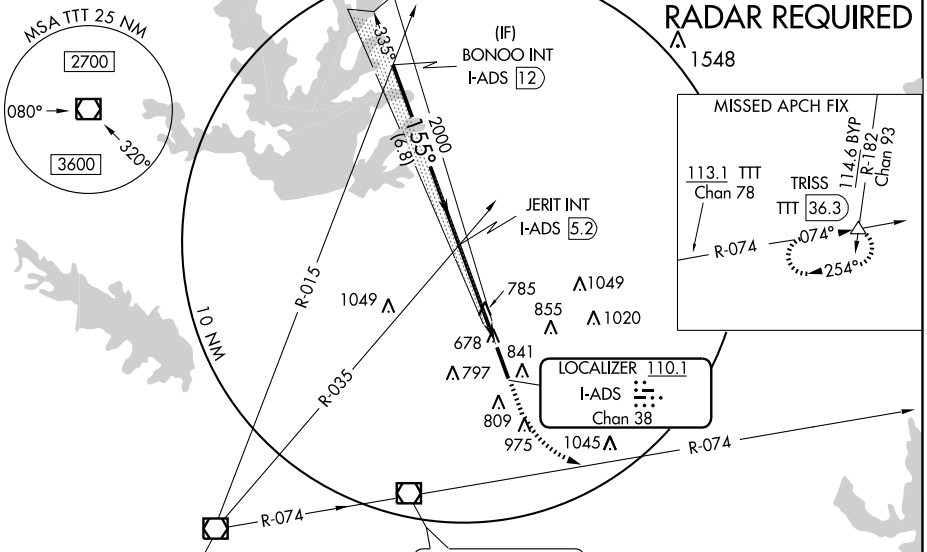
MALSRS



MISSED APPROACH: Climb to 1500 then climbing left turn to 3000 via heading 105° and TTT VOR/DME R-074 to TRISS Int/TTT 36.3 DME and hold.

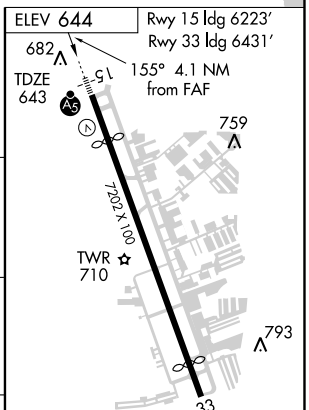
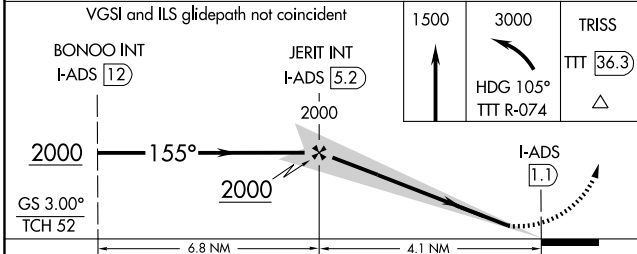
| | | | | | |
|----------------------|--|---|-------------------------|---------------------------|-------------------------|
| ATIS 133.4 | REGIONAL APP CON 124.3 282.275 | ADDISON TOWER* 126.0 (CTAF) 239.0 | GND CON 121.6 | CLNC DEL 119.55 | UNICOM 122.95 |
|----------------------|--|---|-------------------------|---------------------------|-------------------------|

RADAR REQUIRED



SC-2, 19 NOV 2009 to 17 DEC 2009

SC-2, 19 NOV 2009 to 17 DEC 2009



| CATEGORY | A | B | C | D |
|----------|--------|-------------|-------------------------|-----------------------|
| S-ILS 15 | | 893-1 | 250 (300-1) | |
| S-LOC 15 | | 1040-1 | 397 (400-1) | |
| CIRCLING | 1200-1 | 556 (600-1) | 1240-1½ 596 (600-1½) | 1280-2 636 (700-2) |

| FAF to MAP 4.1 NM | | | | | |
|-------------------|------|------|------|------|------|
| Knots | 60 | 90 | 120 | 150 | 180 |
| Min:Sec | 4:06 | 2:44 | 2:03 | 1:38 | 1:22 |