

ILS or LOC RWY 33

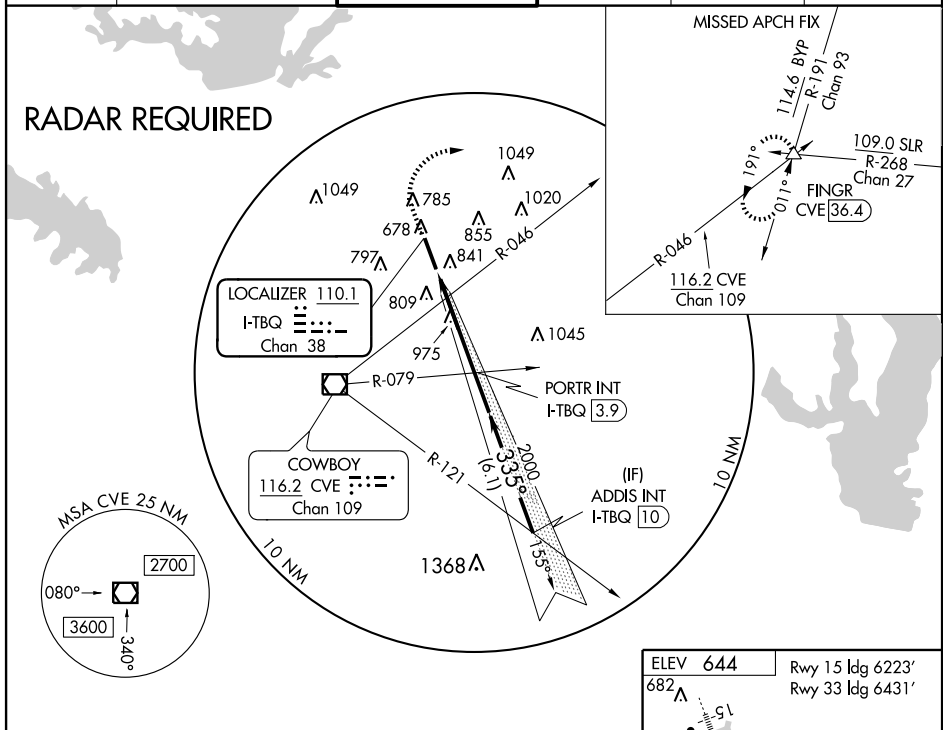
DALLAS/ADDISON (ADS)

LOC/DME I-TBQ 110.1 Chan 38	APP CRS 335°	Rwy Idg 6431 TDZE 644 Apt Elev 644
---	------------------------	---

⚠ Visibility reduction by helicopters NA. When control tower closed, obtain local altimeter setting on UNICOM; when not received, use Dallas-Love Field altimeter setting and increase all DAs 39 feet and all MDAs 40 feet.

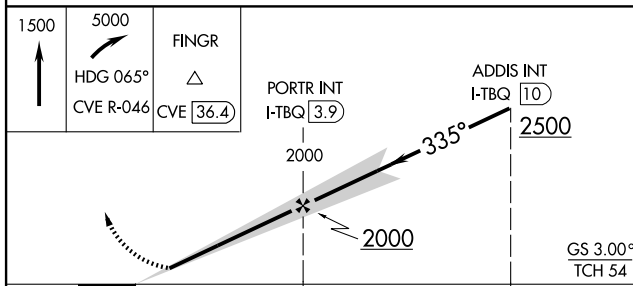
MISSED APPROACH: Climb to 1500 then climbing right turn to 5000 via heading 065° and CVE VOR/DME R-046 to FINGR INT/CVE 36.4 DME and hold.

ATIS 133.4	REGIONAL APP CON 124.3 282.275	ADDISON TOWER * 126.0 (CTAF) 239.0	GND CON 121.6	CLNC DEL 119.55	UNICOM 122.95
----------------------	--	---	-------------------------	---------------------------	-------------------------

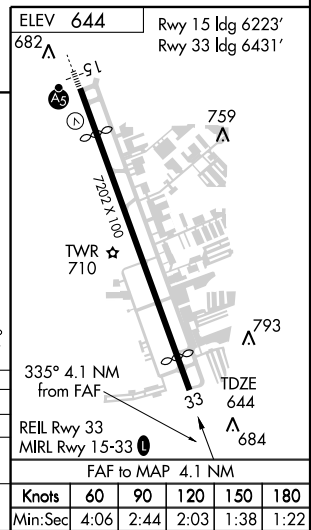


SC-2, 11 MAR 2010 to 08 APR 2010

SC-2, 11 MAR 2010 to 08 APR 2010



CATEGORY	A	B	C	D
S-ILS 33	894-1 250 (300-1)			
S-LOC 33	1240-1 596 (600-1)	1240-1½ 596 (600-1½)	1240-1¾ 596 (600-1¾)	1240-2 596 (600-2)
CIRCLING	1240-1 596 (600-1)	1240-1½ 596 (600-1½)	1280-2 636 (700-2)	



Knots	60	90	120	150	180
Min:Sec	4:06	2:44	2:03	1:38	1:22