

WAAS CH 82202 W15A	APP CRS 155°	Rwy ldg 6223 TDZE 643 Apt Elev 644
--	------------------------	---

RNAV (GPS) RWY 15

DALLAS/ADDISON (ADS)

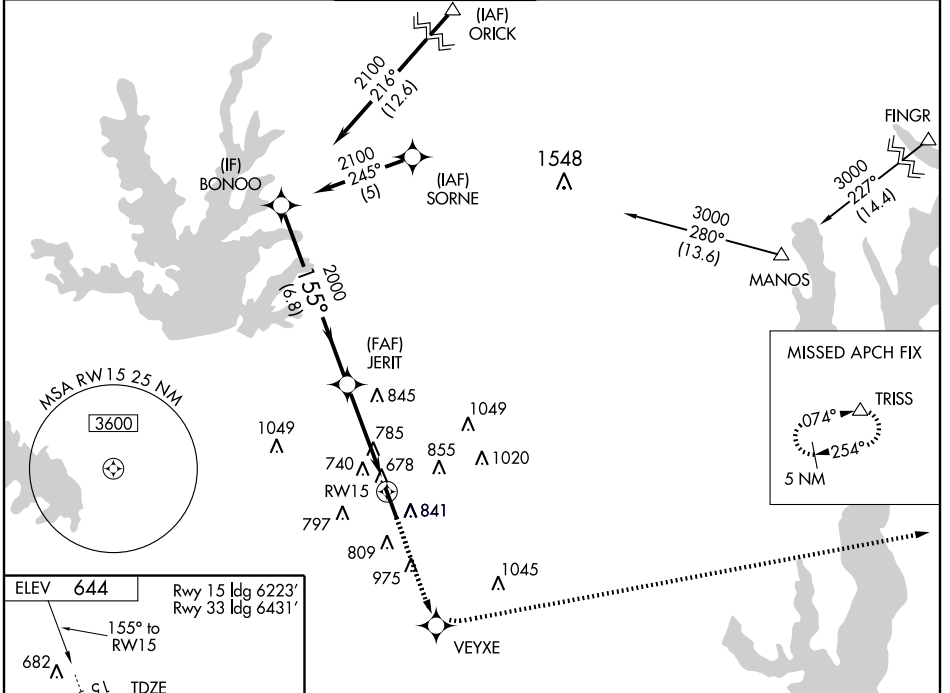
⚠ Inoperative table does not apply to LPV all Cats, LNAV/VNAV all Cats, and LNAV Cats A/B. BARO-VNAV NA when using Dallas Love Field altimeter setting. For uncompensated BARO-VNAV systems, LNAV/VNAV NA below -16°C (4°F) or above 47°C (117°F). DME/DME RNP-0.3 NA. Visibility reduction by helicopters NA. For inoperative MALSR increase LNAV Cat C visibility to 1/4. When control tower closed, obtain local altimeter setting on UNICOM; when not received use Dallas-Love Field altimeter and increase all DAs by 39 feet and all MDAs by 40 feet.

MALSR



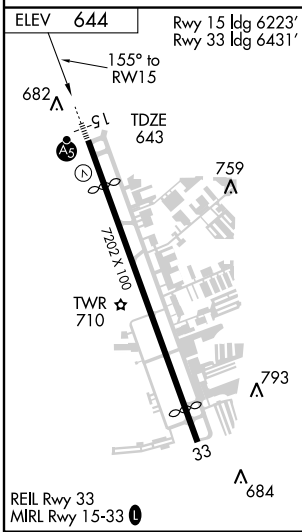
MISSED APPROACH:
Climb to 3000 direct VEYXE and via 074° track to TRISS and hold.

ATIS 133.4	REGIONAL APP CON 124.3 282.275	ADDISON TOWER ★ 126.0 (CTAF) 239.0	GND CON 121.6	CLNC DEL 119.55	UNICOM 122.95
----------------------	--	--	-------------------------	---------------------------	-------------------------



SC-2, 19 NOV 2009 to 17 DEC 2009

SC-2, 19 NOV 2009 to 17 DEC 2009



BONOO		3000	VEYXE	TRISS
2100	155°	JERIT	074° TRK	△
Procedure Turn NA		RWY 15		
GS 3.00° TCH 52		VGSi and RNAV glidepath not coincident.		
6.8 NM		4.1 NM		
CATEGORY	A	B	C	D
LPV DA	943-1 300 (300-1)			
LNAV/VNAV DA	1076-1 433 (500-1)			
LNAV MDA	1100-1 457 (500-1)			
CIRCLING	1200-1	556 (600-1)	1240-1½ 596 (600-1½)	1280-2 636 (700-2)