

RNAV (GPS) RWY 33

DALLAS/ADDISON (ADS)

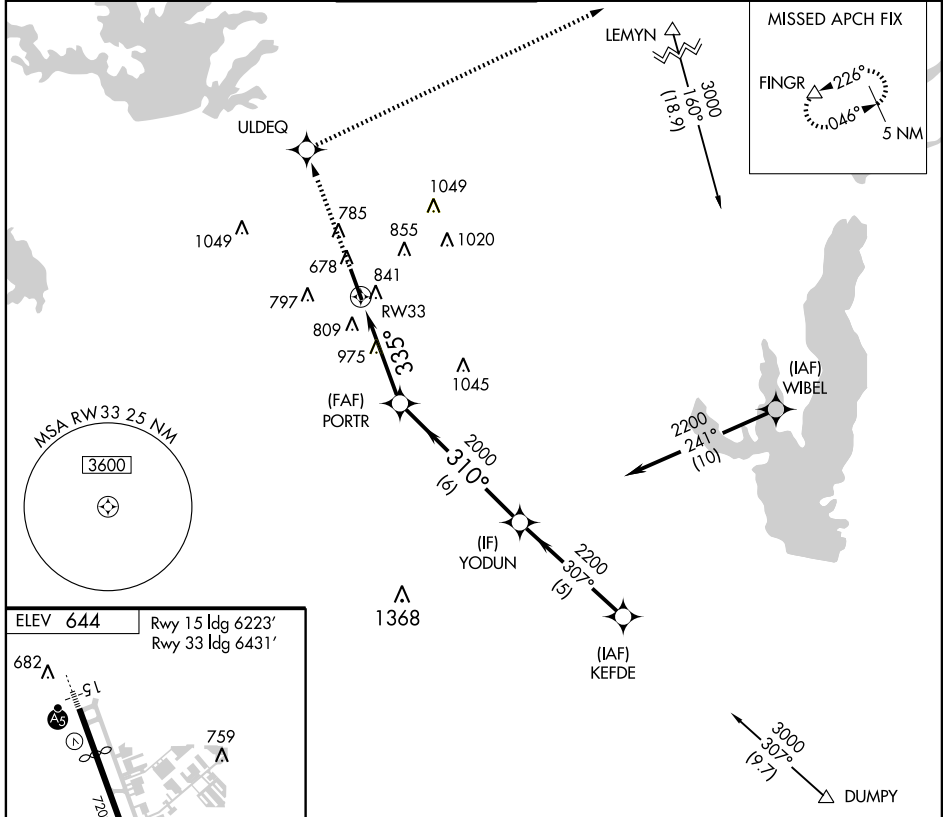
APP CRS 335°	Rwy ldg 6431
	TDZE 644
	Apt Elev 644

▼ DME/DME RNP-0.3 NA. Visibility reduction by helicopters NA. When control tower closed, obtain local altimeter setting on unicom; when not received use Dallas-Love Field altimeter setting and increase all MDAs 40 feet and LNAV visibility Cats C and D ¼ mile and circling Cat C visibility ¼ mile.

▲

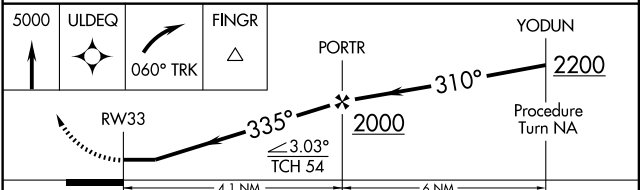
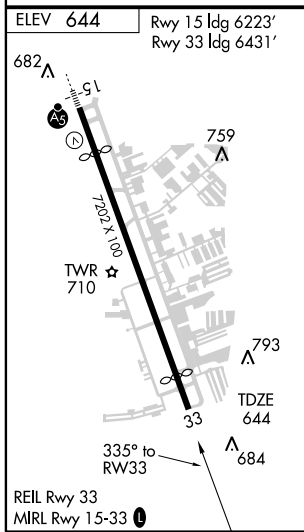
MISSED APPROACH: Climb to 5000 direct ULDEQ and via 060° track to FINGR and hold.

ATIS 133.4	REGIONAL APP CON 124.3 282.275	ADDISON TOWER * 126.0 (CTAF) 0 239.0	GND CON 121.6	CLNC DEL 119.55	UNICOM 122.95
----------------------	--	--	-------------------------	---------------------------	-------------------------



SC-2, 19 NOV 2009 to 17 DEC 2009

SC-2, 19 NOV 2009 to 17 DEC 2009



CATEGORY	A	B	C	D
LNAV MDA	1240-1	596 (600-1)	1240-1½ 596 (600-1½)	1240-1¾ 596 (600-1¾)
CIRCLING	1240-1	596 (600-1)	1240-1½ 596 (600-1½)	1280-2 636 (700-2)