

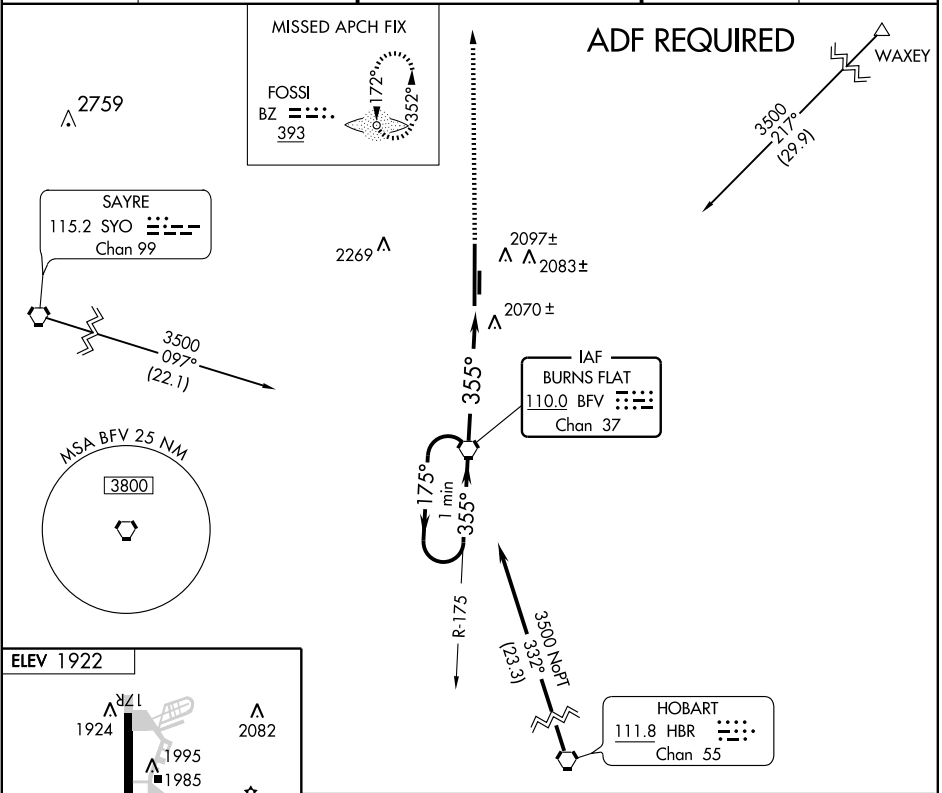
CLINTON, OKLAHOMA

AL-778 (FAA)

VORTAC BFV 110.0 Chan 37	APP CRS 355°	Rwy Idg TDZE Apt Elev	13503 1913 1922
---------------------------------------	------------------------	-----------------------------	--

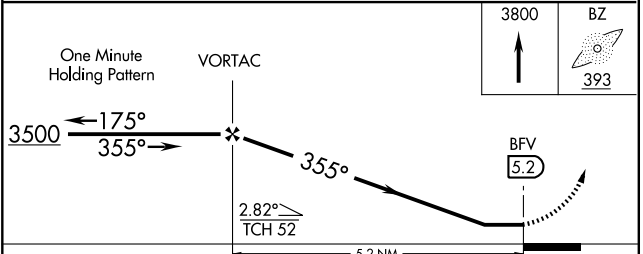
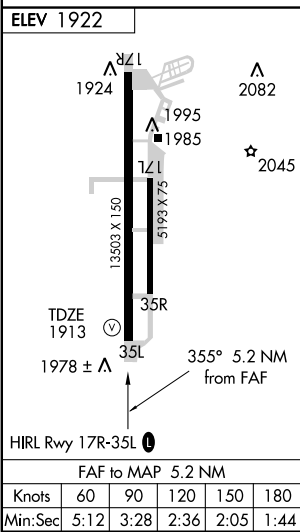
VOR RWY 35L
CLINTON-SHERMAN (CSM)

<p>Circling not authorized east of runway 17R-35L.</p>		<p>MISSED APPROACH: Climb to 3800 direct BZ LOM and hold.</p>		
ASOS 135.225	FORT WORTH CENTER 128.4 269.375	CLINTON-SHERMAN TOWER * 119.6 (CTAF) 0 256.9	GND CON 121.7 239.0	UNICOM 122.95



SC-1, 11 MAR 2010 to 08 APR 2010

SC-1, 11 MAR 2010 to 08 APR 2010



CATEGORY	A	B	C	D	E
S-35L	2320-1	407 (400-1)	2320-1¼	407 (400-1¼)	2320-1½ 407 (400-1½)
CIRCLING	2400-1	478 (500-1)	2400-1½ 478 (500-1½)	2480-2 558 (600-2)	2620-2½ 698 (700-2½)

CLINTON, OKLAHOMA
Amdt 11D 08325

35° 20' N-99° 12' W

CLINTON-SHERMAN (CSM)
VOR RWY 35L