

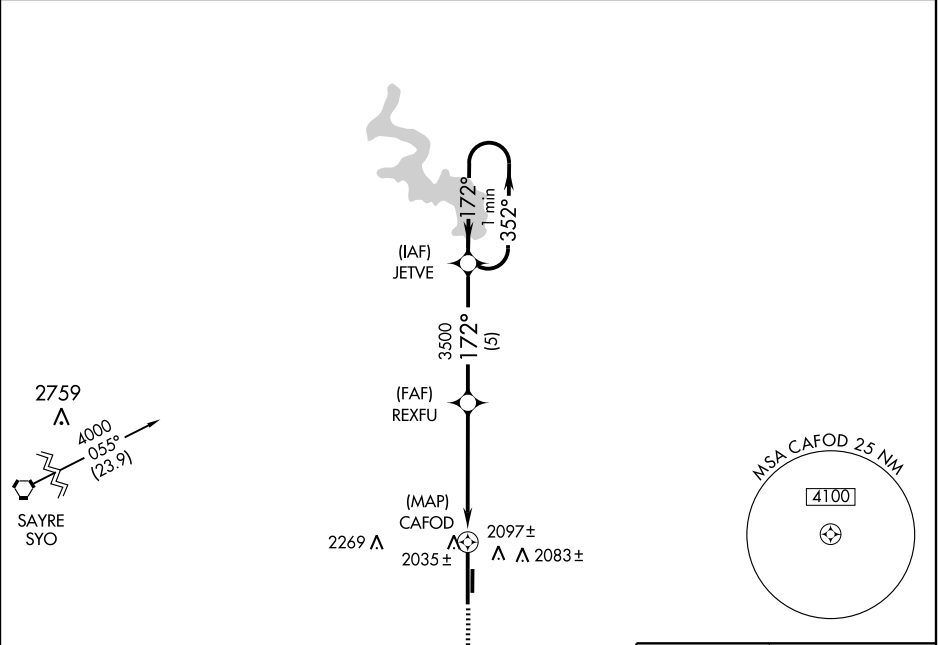
GPS RWY 17R

CLINTON-SHERMAN (CSM)

APP CRS	Rwy Idg	13503
172°	TDZE	1922
	Apt Elev	1922

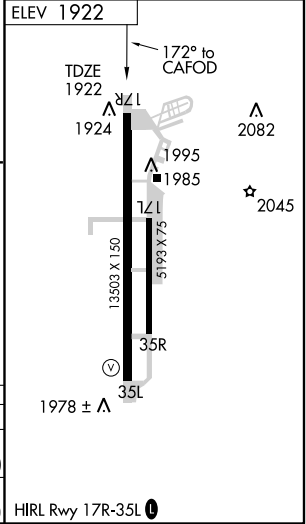
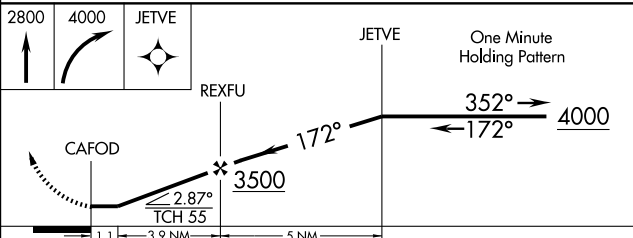
⚠ Circling not authorized east of Rwy 17R-35L. **⚠** MISSED APPROACH: Climb to 2800 then climbing right turn to 4000 direct JETVE and hold.

ASOS 135.225	FORT WORTH CENTER 128.4 269.375	CLINTON-SHERMAN TOWER * 119.6 (CTAF) 256.9	GND CON 121.7 239.0	UNICOM 122.95
------------------------	---	--	-------------------------------	-------------------------



SC-1, 11 MAR 2010 to 08 APR 2010

SC-1, 11 MAR 2010 to 08 APR 2010



CATEGORY	A	B	C	D	E
S-17R	2340-1 418 (500-1)		2340-1¼ 418 (500-1¼)		2340-1½ 418 (500-1½)
CIRCLING	2400-1 478 (500-1)		2400-1½ 478 (500-1½)	2480-2 558 (600-2)	2620-2½ 698 (700-2½)