

RNAV (RNP) Z RWY 19R

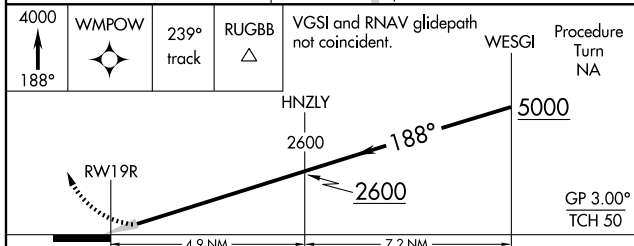
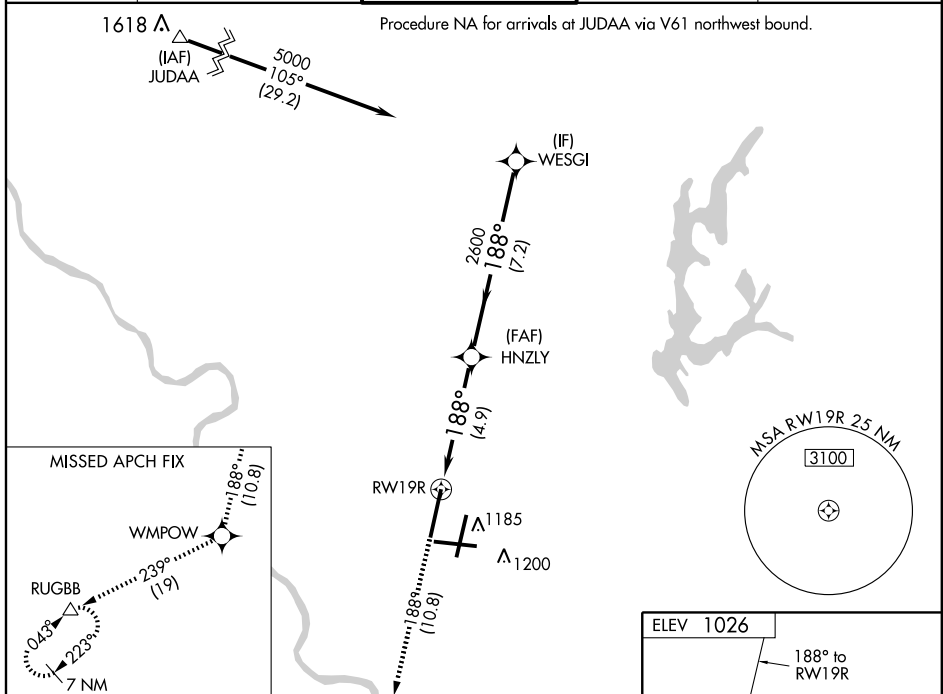
KANSAS CITY INTL (MCI)

APP CRS 188°	Rwy Idg 10801
	TDZE 989
	Apt Elev 1026

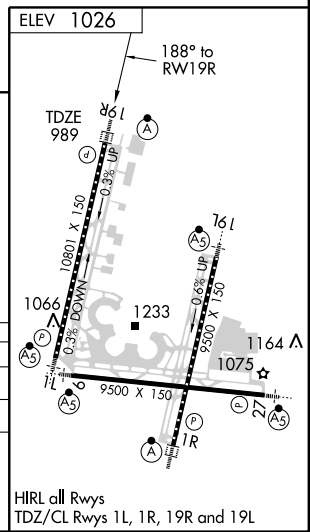
GPS required.
NA For uncompensated Baro-VNAV systems, procedure NA below -1°C (30°F) or above 46°C (114°F).
 For inoperative ALSF, increase RNP 0.15 and 0.30 visibility to RVR 5000.

ALSF-2
MISSED APPROACH: Climb to 4000 via 188° track to WMPOW and via 239° track to RUGBB and hold.

ATIS 128.375	KANSAS CITY APP CON 120.95 318.1	INTERNATIONAL TOWER 128.2 254.25	GND CON 121.8	CLNC DEL 135.7
------------------------	--	--	-------------------------	--------------------------



CATEGORY	A	B	C	D
RNP 0.15 DA		1239/24	250 (300-½)	
RNP 0.30 DA		1275/24	286 (300-½)	



SPECIAL AIRCRAFT & AIRCREW AUTHORIZATION REQUIRED

NC-3, 11 MAR 2010 to 08 APR 2010

NC-3, 11 MAR 2010 to 08 APR 2010