

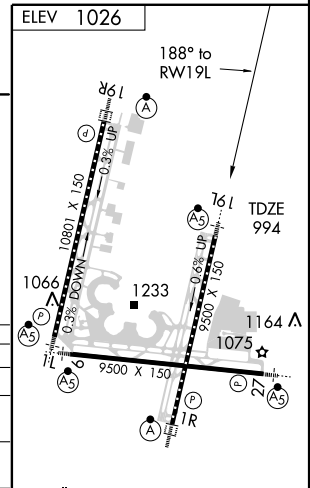
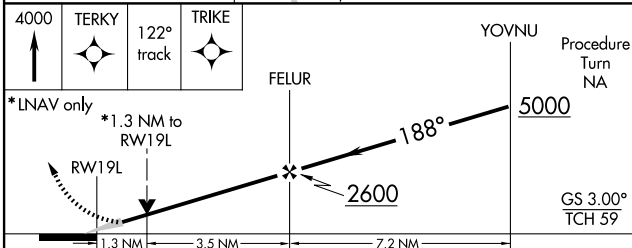
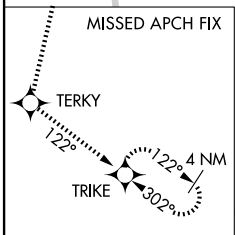
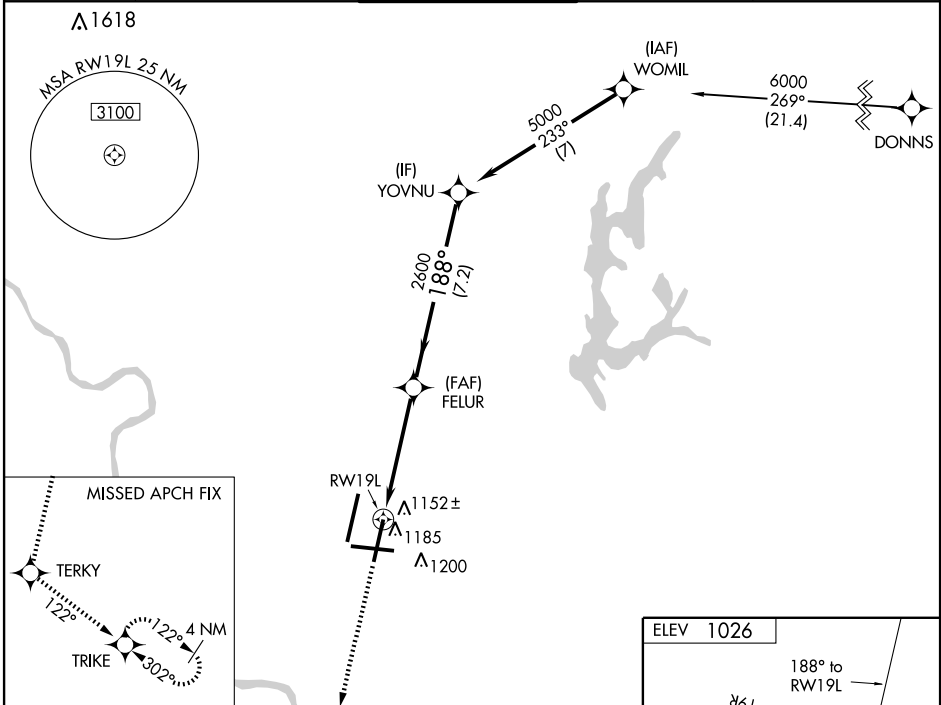
# RNAV (GPS) Y RWY 19L

KANSAS CITY INTL (MCI)

WAAS CH <b>82108</b> <b>W19A</b>	APP CRS <b>188°</b>	Rwy Idg <b>9500</b> TDZE <b>994</b> Apt Elev <b>1026</b>
--	------------------------	--

<p><b>▼</b> DME/DME RNP- 0.3 NA. For uncompensated Baro-VNAV systems, LNAV/VNAV NA below -17°C (2°F) or above 46°C (114°F). For inoperative MALSRL increase LPV Cat E visibility to RVR 4000, LNAV/VNAV Cat E visibility to 1½ mile, LNAV Cat E visibility to 1½ mile.</p>	<p>MALSRL </p>	<p>MISSED APPROACH: Climb to 4000 direct TERKY and via 122° track direct TRIKE and hold.</p>
--	--------------------	--

ATIS <b>128.375</b>	KANSAS CITY APP CON <b>120.95 318.1</b>	INTERNATIONAL TOWER <b>128.2 254.25</b>	GND CON <b>121.8</b>	CLNC DEL <b>135.7</b>
------------------------	--	--	-------------------------	--------------------------



CATEGORY	A	B	C	D	E
LPV DA		1244/24	250 (300-½)		
LNAV/VNAV DA		1397/50	403 (400-1)		
LNAV MDA	1440/24	446 (500-½)	1440/40 446 (500-¾)	1440/50	446 (500-1)
CIRCLING	1540-1	514 (600-1)	1540-1½ 514 (600-1½)	1580-2	554 (600-2)

HIRL all Rwys  
TDZ/CL Rwys 1L, 1R, 19R and 19L

NC-3, 11 MAR 2010 to 08 APR 2010

NC-3, 11 MAR 2010 to 08 APR 2010