


RNAV (GPS) Y RWY 9 KANSAS CITY INTL (MCI)

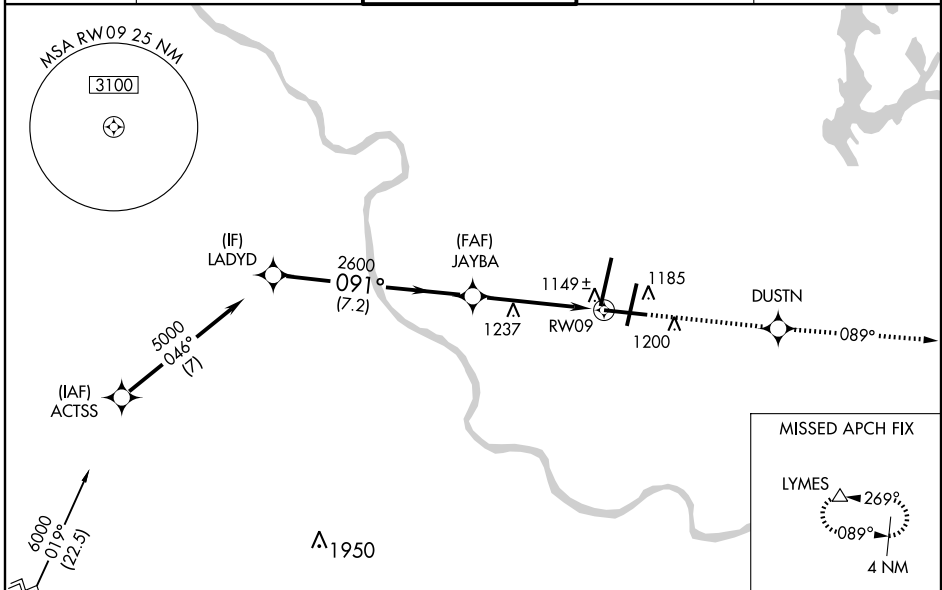
WAAS CH 56608 W09A	APP CRS 091°	Rwy Idg TDZE 1015 Apt Elev 1026
--	------------------------	---

▼ For uncompensated Baro-VNAV systems, LNAV/VNAV NA below -17°C (2°F) or above 46°C (114°F).
DME/DME RNP-0.3 NA
For inoperative MALSR, increase LNAV Cats. A and B visibility to RVR 5000 and Cat. E visibility to 1 3/4 mile.
Inoperative table does not apply to LPV and LNAV/VNAV.

MALSR 

MISSED APPROACH: Climb to 4000 direct DUSTN and via 089° track to LYMES and hold.

ATIS 128.375	KANSAS CITY APP CON 120.95 318.1	INTERNATIONAL TOWER 128.2 254.25	GND CON 121.8	CLNC DEL 135.7
------------------------	--	--	-------------------------	--------------------------

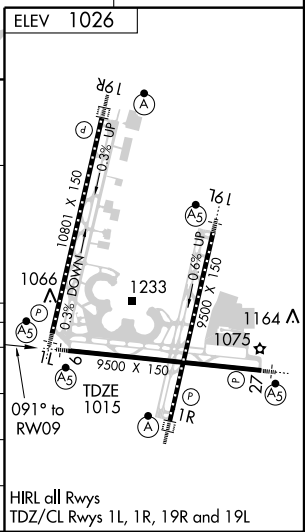
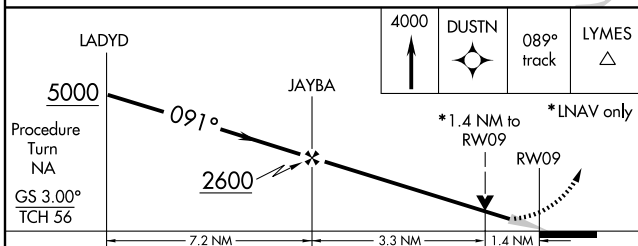


NC-3, 11 MAR 2010 to 08 APR 2010

NC-3, 11 MAR 2010 to 08 APR 2010

MISSED APCH FIX

ELEV 1026
Procedure NA for arrivals at HOOZE via V502 southwest bound.



CATEGORY	A	B	C	D	E
LPV DA	1315/50 300 (300-1)				
LNAV/VNAV DA	1419-1 1/2 404 (400-1 1/2)				
LNAV MDA	1500/40	485 (500-3/4)	1500/50 485 (500-1)	1500/60 485 (500-1 1/4)	
CIRCLING	1540-1	514 (600-1)	1540-1 1/2 514 (600-1 1/2)	1580-2	554 (600-2)

HIRL all Rwys
TDZ/CL Rwys 1L, 1R, 19R and 19L