

SAFFORD, ARIZONA

AL-789 (FAA)

GPS RWY 12

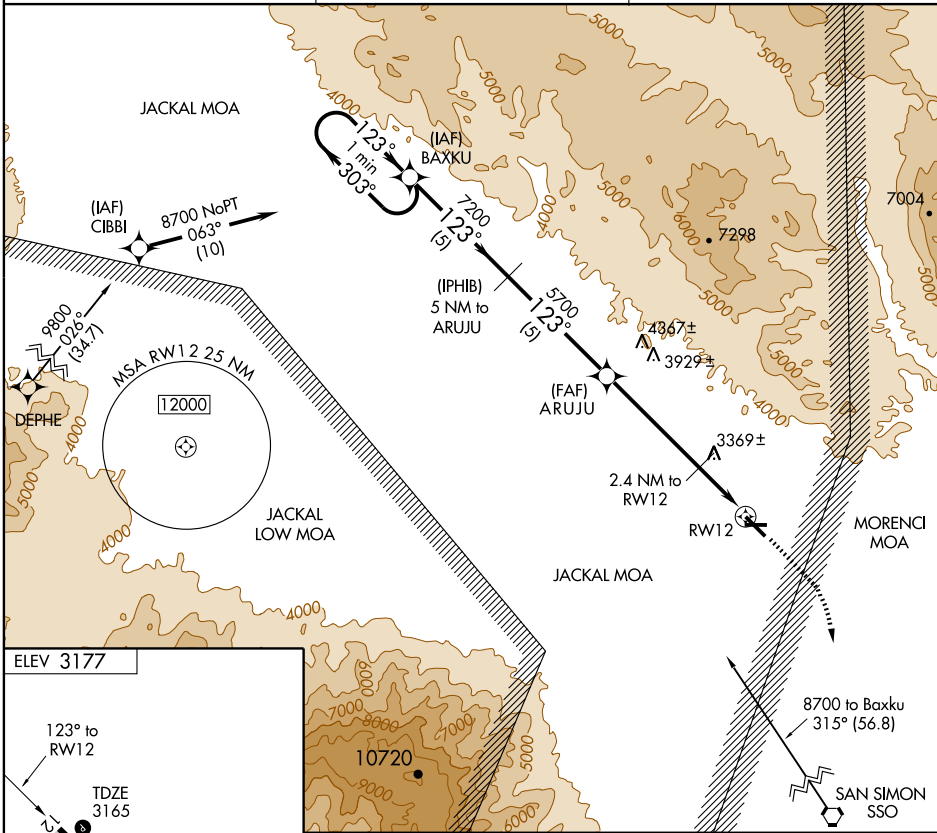
SAFFORD RGNL (SAD)

APP CRS 123°	Rwy Idg 6006
	TDZE 3165
	Apt Elev 3177

NA

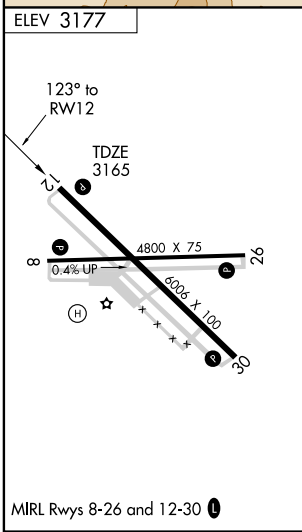
MISSED APPROACH: Climb to 4000 then climbing right turn to 8700 direct SSO VORTAC.

ASOS 124.175	ALBUQUERQUE CENTER 134.45 327.15	UNICOM 122.8 (CTAF) 0
------------------------	--	---------------------------------



SW-4, 11 MAR 2010 to 08 APR 2010

SW-4, 11 MAR 2010 to 08 APR 2010



One Minute Holding Pattern	BAXKU	(IPHIB) 5 NM to ARUJU	4000	8700	SSO
	8700 ← 303°	→ 123°	7200	5700	4080
	← 5 NM	← 5 NM	← 4.6 NM	← 2.4 NM	
CATEGORY	A	B	C	D	
S-12	3560-1	395 (400-1)			NA
CIRCLING	3720-1 543 (600-1)	3760-1 583 (600-1)			NA

SAFFORD, ARIZONA
Orig-A 09183

32°51'N-109°38'W

SAFFORD RGNL (SAD)
GPS RWY 12