

GPS RWY 12

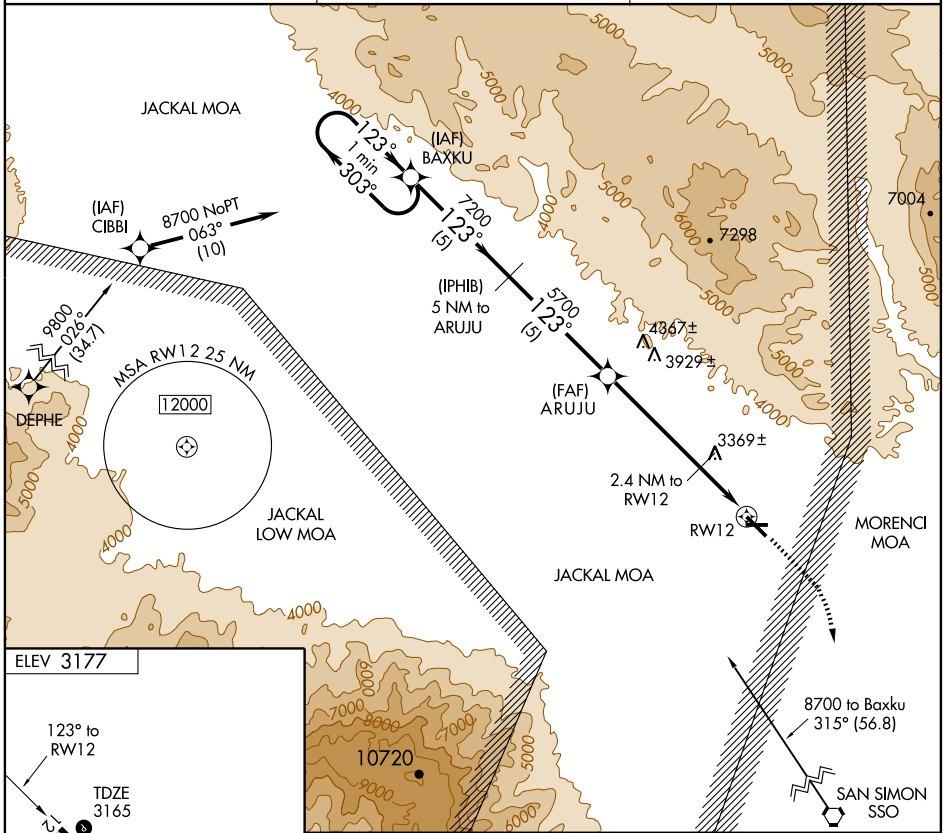
SAFFORD RGNL (SAD)

APP CRS	Rwy Idg	6006
123°	TDZE	3165
	Apt Elev	3177

NA

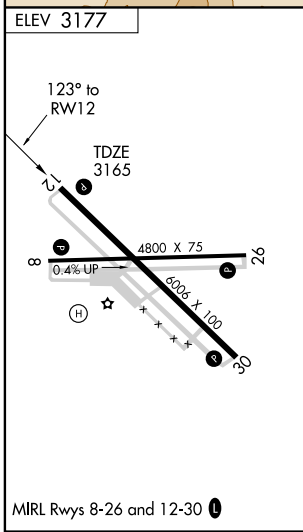
MISSED APPROACH: Climb to 4000 then climbing right turn to 8700 direct SSO VORTAC.

ASOS 124.175	ALBUQUERQUE CENTER 134.45 327.15	UNICOM 122.8 (CTAF) 0
------------------------	--	---------------------------------



SW-4, 19 NOV 2009 to 17 DEC 2009

SW-4, 19 NOV 2009 to 17 DEC 2009



One Minute Holding Pattern	BAXKU	(IPHIB) 5 NM to ARUJU	4000	8700	SSO
	8700 ← 303°	123° → 7200	5700	4080	2.4 NM to RW12
CATEGORY	A	B	C	D	
S-12	3560-1	395 (400-1)			NA
CIRCLING	3720-1 543 (600-1)	3760-1 583 (600-1)			NA