

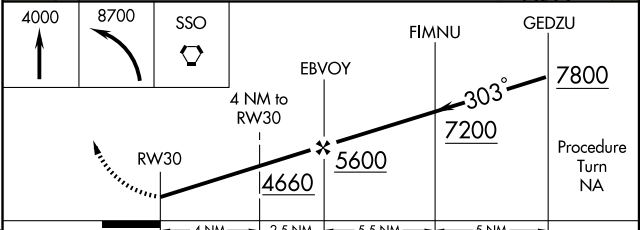
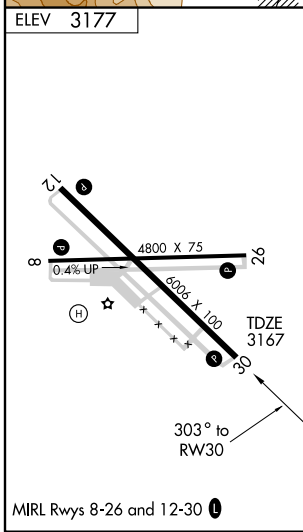
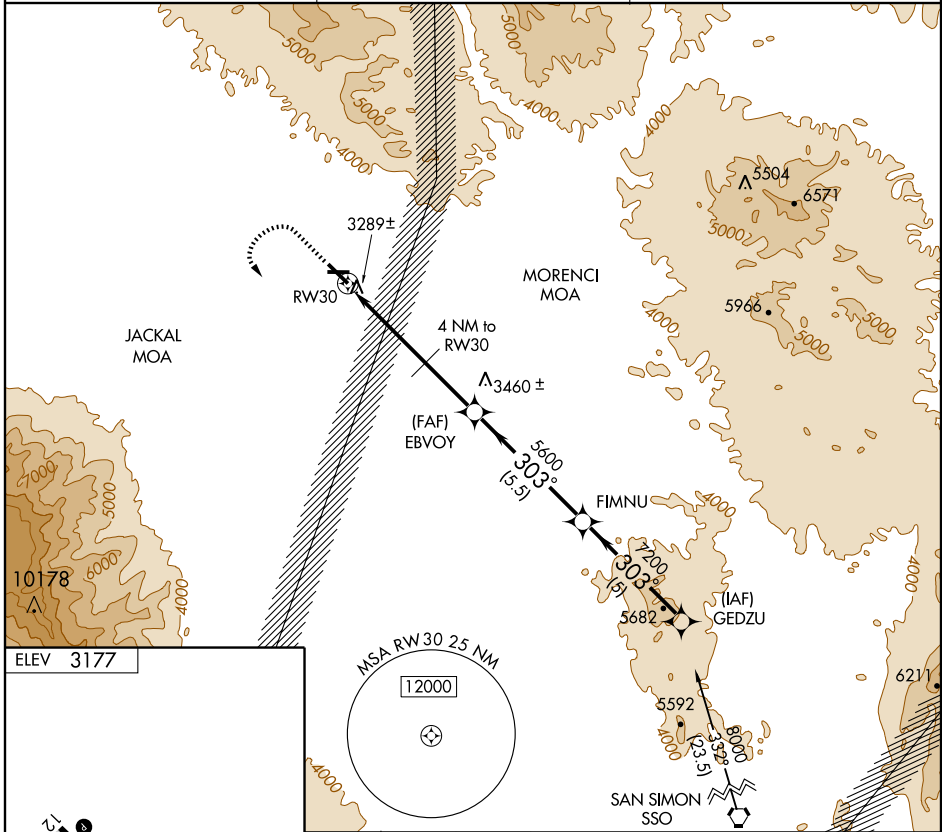
GPS RWY 30

SAFFORD RGNL (SAD)

APP CRS 303°	Rwy Idg TDZE Apt Elev	6006 3167 3177
------------------------	-----------------------------	---

NA	MISSED APPROACH: Climb to 4000 then climbing left turn to 8700 direct SSO VORTAC.
-----------	---

ASOS 124.175	ALBUQUERQUE CENTER 134.45 327.15	UNICOM 122.8 (CTAF) 0
------------------------	--	---------------------------------



	A	B	C	D
CATEGORY	S-30		NA	
	3540-1 373 (400-1)			
CIRCLING	3720-1 543 (600-1)	3760-1 583 (600-1)	NA	

SW-4, 19 NOV 2009 to 17 DEC 2009

SW-4, 19 NOV 2009 to 17 DEC 2009