

# ILS or LOC RWY 17

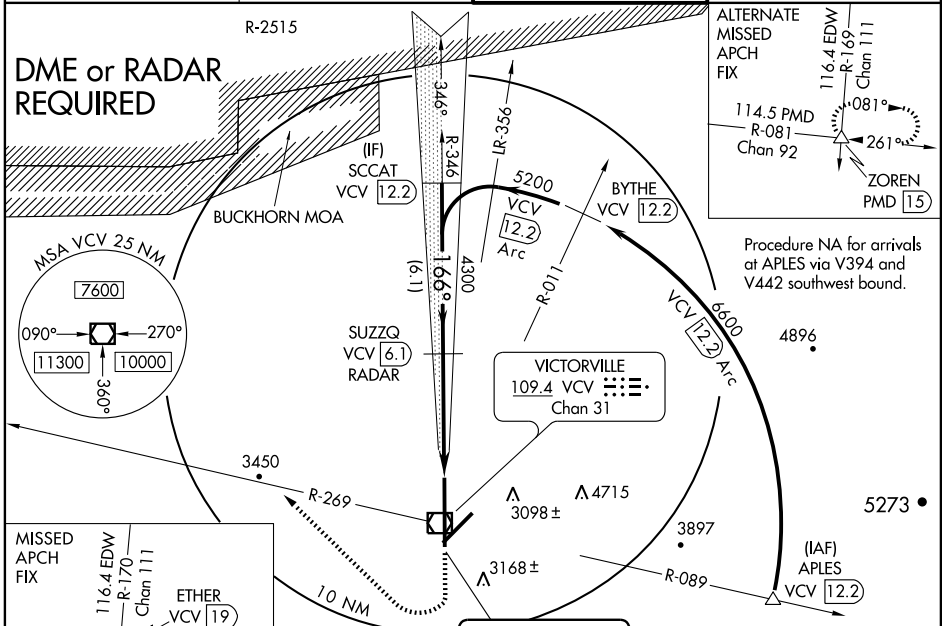
VICTORVILLE/SOUTHERN CALIFORNIA LOGISTICS (VCV)

LOC I-VCV <b>108.75</b>	APP CRS <b>166°</b>	Rwy Ldg TDZE Apt Elev	<b>15050</b> <b>2825</b> <b>2885</b>
----------------------------	------------------------	-----------------------------	--

**⚠** When local altimeter setting not received, use Edwards AFB altimeter setting and increase all DA and MDA 160 feet. Increase all visibilities 1/2 mile.  
**⚠** DME from VCV VOR/DME. Simultaneous reception of I-VCV and VCV DME required.

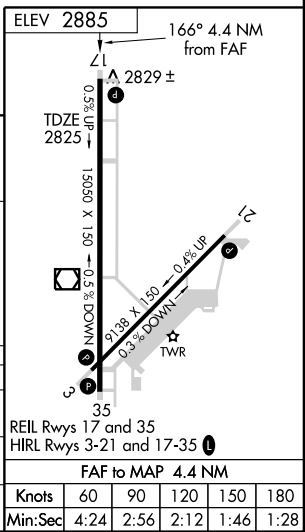
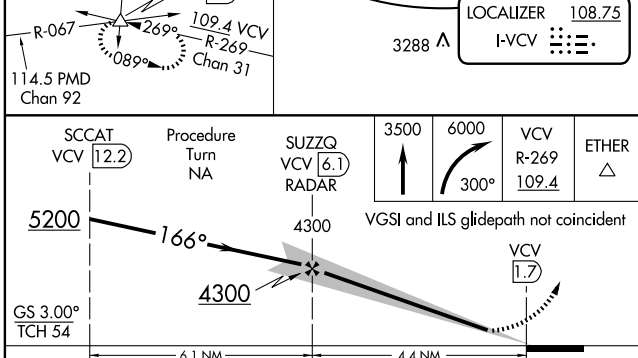
**MISSED APPROACH:** Climb to 3500, then climbing right turn to 6000 via heading 300° and VCV VOR/DME R-269 to ETHER INT and hold.

AWOS-3 <b>109.4</b>	JOSHUA APP CON <b>124.55 363.0</b>	VICTORVILLE TOWER* <b>118.35 0</b>	GND CON <b>124.45</b>
------------------------	---------------------------------------	---------------------------------------	--------------------------



SW-3, 11 MAR 2010 to 08 APR 2010

SW-3, 11 MAR 2010 to 08 APR 2010



CATEGORY	A	B	C	D
S-ILS 17		3025/40	200 (200-34)	
S-LOC 17		3080/50	255 (200-1)	
CIRCLING	3360-1 475 (500-1)	3420-1 535 (600-1)	3420-1½ 535 (600-1½)	3580-2¼ 695 (700-2¼)