

RNAV (GPS) RWY 23

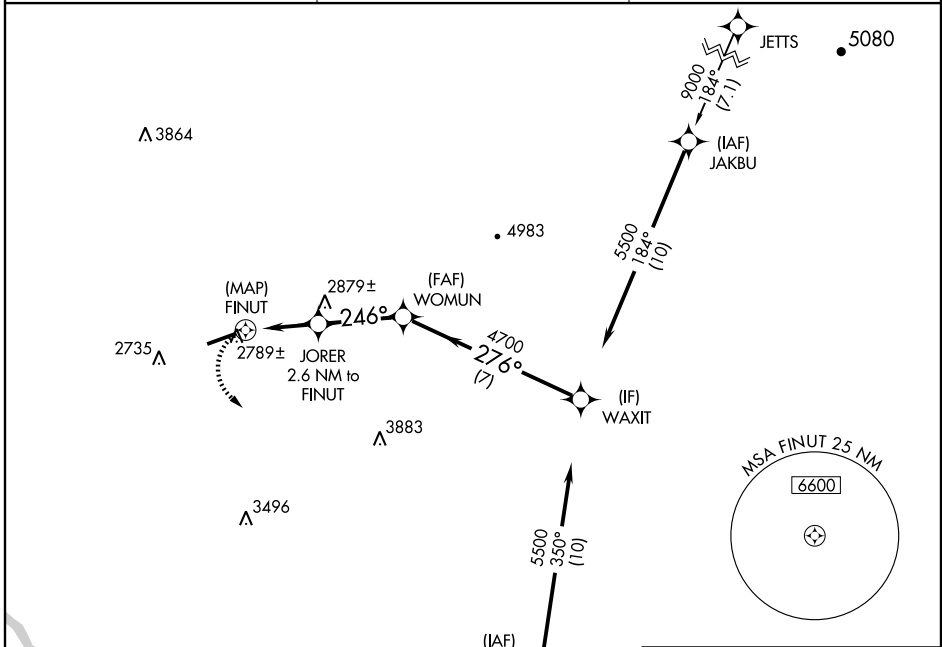
PULLMAN/MOSCOW RGNL (PUW)

APP CRS	Rwy Idg	5240
246°	TDZE	2549
	Apt Elev	2556

▽ DME/DME RNP-0.3 NA.
Visibility reduction by helicopters NA.

MISSED APPROACH: Climbing left turn to 6000 direct CESIN and hold.

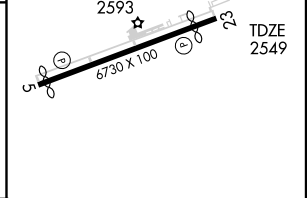
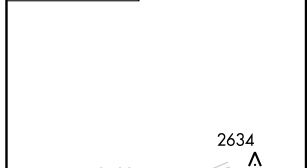
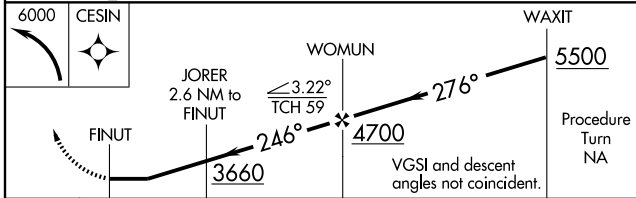
ASOS 135.675	SEATTLE CENTER 123.95 282.3	UNICOM 122.8 (CTAF) ①
------------------------	---------------------------------------	--



NW-1, 11 MAR 2010 to 08 APR 2010

NW-1, 11 MAR 2010 to 08 APR 2010

ELEV 2556 **D**



	0.5	2.6 NM	3 NM	7 NM
CATEGORY	A	B	C	D
RNAV MDA	3180-1	631 (700-1)	3180-1 ³ / ₄ 631 (700-1 ³ / ₄)	3180-2 631 (700-2)
CIRCLING	3220-1	664 (700-1)	3220-1 ³ / ₄ 664 (700-1 ³ / ₄)	3220-2 664 (700-2)

HIRL Rwy 5-23 **①**
REIL Rws 5 and 23 **①**