

PULLMAN/MOSCOW, WASHINGTON

AL-798 (FAA)

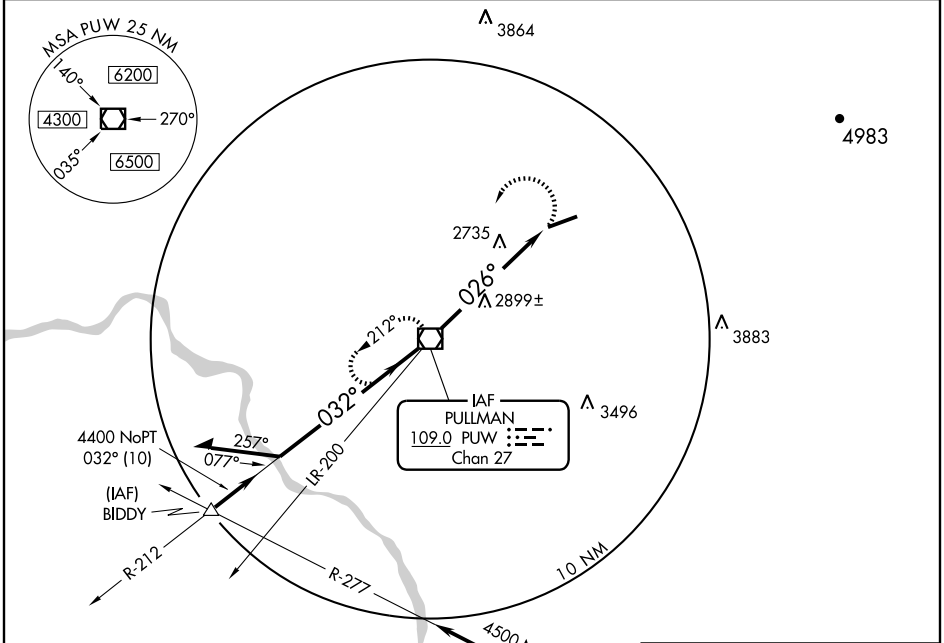
VOR/DME PUV 109.0 Chan 27	APP CRS 026°	Rwy Idg TDZE Apt Elev 6200 2540 2556
--	------------------------	--

VOR RWY 5

PULLMAN/MOSCOW RGNL (PUW)

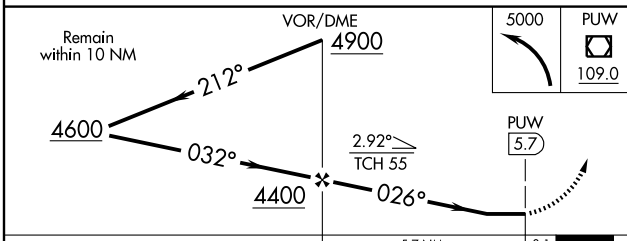
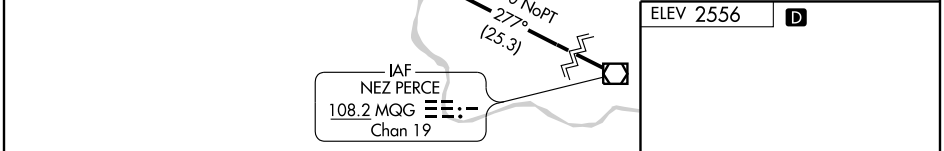
▼ When VGSI inoperative, circling Rwy 5 NA at night. Visibility reduction by helicopters NA. MISSED APPROACH: Climbing left turn to 5000 direct PUV VOR/DME and hold.

ASOS 135.675	SEATTLE CENTER 123.95 282.3	UNICOM 122.8 (CTAF) 0
------------------------	---------------------------------------	--



NW-1, 11 MAR 2010 to 08 APR 2010

NW-1, 11 MAR 2010 to 08 APR 2010



CATEGORY	A	B	C	D
S-5	3120-1	580 (600-1)	3120-1½ 580 (600-1½)	3120-1¾ 580 (600-1¾)
CIRCLING	3220-1	664 (700-1)	3220-1¾ 664 (700-1¾)	3220-2 664 (700-2)

HIRL Rwy 5-23 0	
REIL Rwys 5 and 23 0	
FAF to MAP 5.7 NM	
Knots	60 90 120 150 180
Min:Sec	5:42 3:48 2:51 2:17 1:54

PULLMAN/MOSCOW, WASHINGTON
Amdt 8A 09015

46°45'N-117°-07'W

VOR RWY 5