

RNAV (GPS) RWY 32

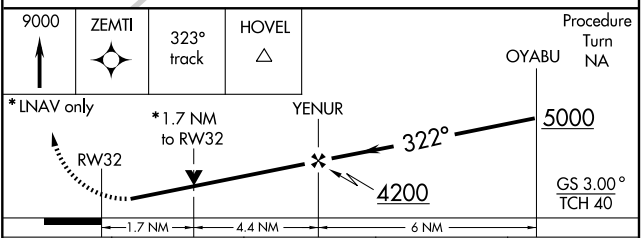
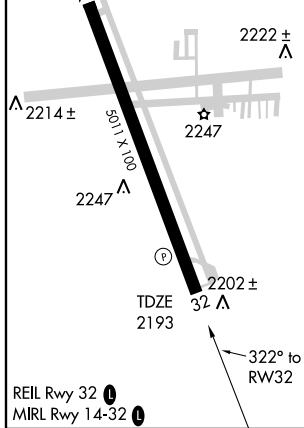
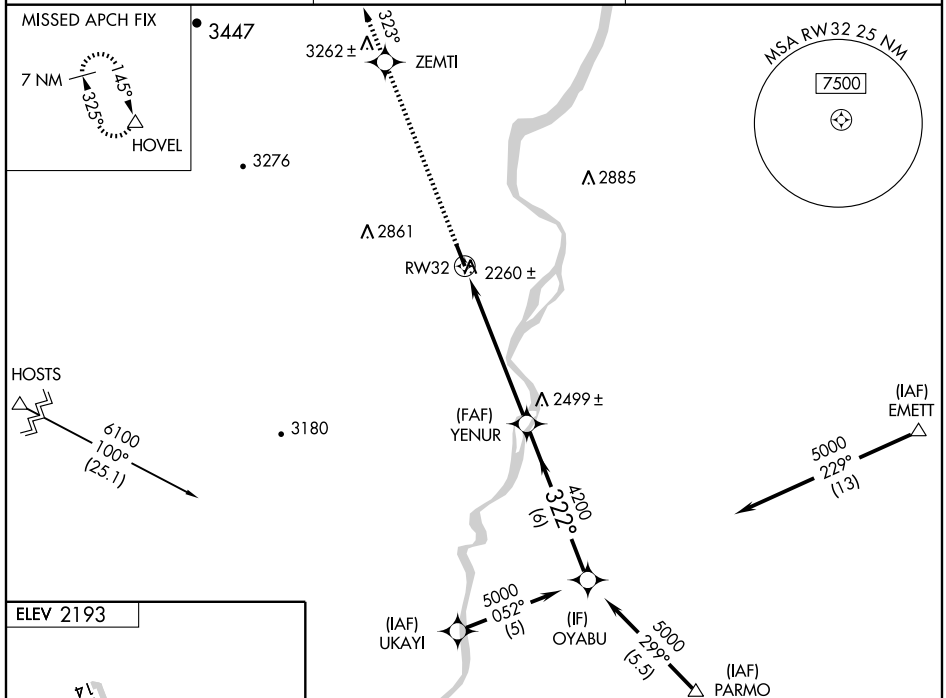
ONTARIO MUNI (ONO)

WAAS CH 87007 W32A	APP CRS 322°	Rwy ldg TDZE 2193 Apt Elev 2193	5011 2193 2193
---------------------------------	------------------------	---	---

▼ For uncompensated Baro-VNAV systems, LNAV/VNAV NA below -19°C (-2°F) or above 44°C (111°F). Baro-VNAV and VDP NA when using Caldwell altimeter setting.
▲ DME/DME RNP -0.3 NA. Visibility reduction by helicopters NA.
 When local altimeter setting not received, use Caldwell altimeter setting and increase DA/MDA 100 feet, and increase LPV and LNAV/VNAV visibility ¼ mile all Cats, LNAV Cat C and Circling Cat C visibility ¼ mile.

MISSED APPROACH: Climb to 9000 direct ZEMTI and via 323° track to HOVEL and hold, continue climb-in-hold to 9000.

ASOS 135,275	SALT LAKE CENTER 128.05 387.15	UNICOM 122.8 (CTAF) 0
------------------------	--	---------------------------------



CATEGORY	A	B	C	D
LPV DA	2443-1		250 (300-1)	
LNAV/DA VNAV	2510-1¼		317 (400-1¼)	
LNAV MDA	2760-1	567 (600-1)	2760-1½ 567 (600-1½)	2760-1¾ 567 (600-1¾)
CIRCLING	2760-1	567 (600-1)	2760-1½ 567 (600-1½)	2760-2 567 (600-2)

NW-1, 11 MAR 2010 to 08 APR 2010

NW-1, 11 MAR 2010 to 08 APR 2010