

WAAS CH 40108 W15A	APP CRS 155°	Rwy Idg TDZE Apt Elev	5000 142 146
--	------------------------	-----------------------------	---

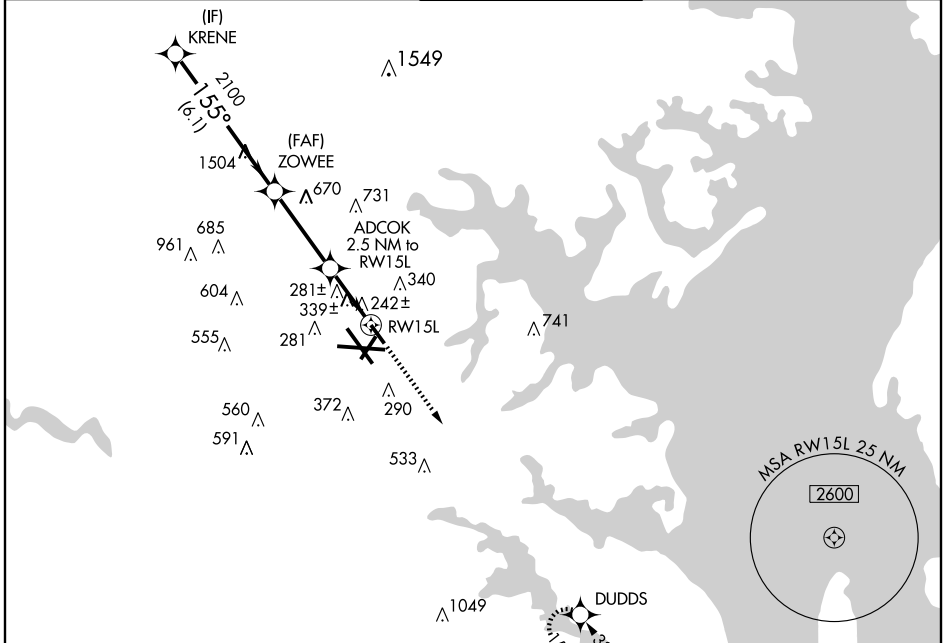
BALTIMORE/
WASHINGTON INTL THURGOOD MARSHALL (BWI)

RNAV (GPS) RWY 15L

For uncompensated Baro-VNAV systems, LNAV/VNAV NA below -15°C (5°F) or above 48°C (118°F).
DME/DME RNP -0.3 NA. Visibility reduction by helicopters NA.

MISSED APPROACH: Climb to 2500
direct DUDDS and hold.

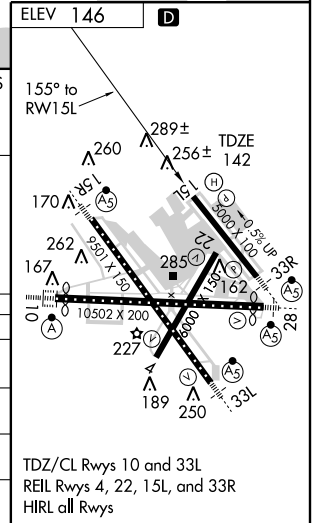
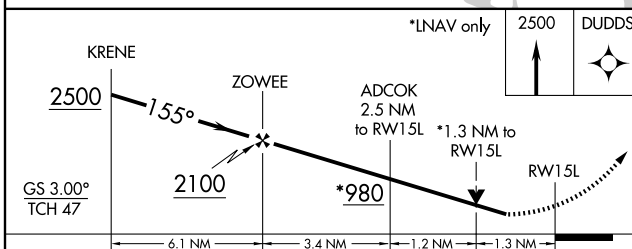
ATIS 115.1 127.8	POTOMAC APP CON 119.7 290.475	BALTIMORE TOWER 119.4 257.8	GND CON 121.9	CLNC DEL 118.05
----------------------------	---	---------------------------------------	-------------------------	---------------------------



NE-3, 11 MAR 2010 to 08 APR 2010

NE-3, 11 MAR 2010 to 08 APR 2010

RADAR REQUIRED



CATEGORY	A	B	C	D
LPV DA		519/60	377 (400-1¼)	
LNAV/VNAV DA		659-1¾	517 (600-1¾)	
LNAV MDA	600/50	458 (500-1)	600/60 458 (500-1¼)	600-1½ 458 (500-1½)
CIRCLING	640-1	494 (500-1)	640-1½ 494 (500-1½)	740-2 594 (600-2)

RNAV (GPS) RWY 15L