

# RNAV (RNP) Z RWY 28

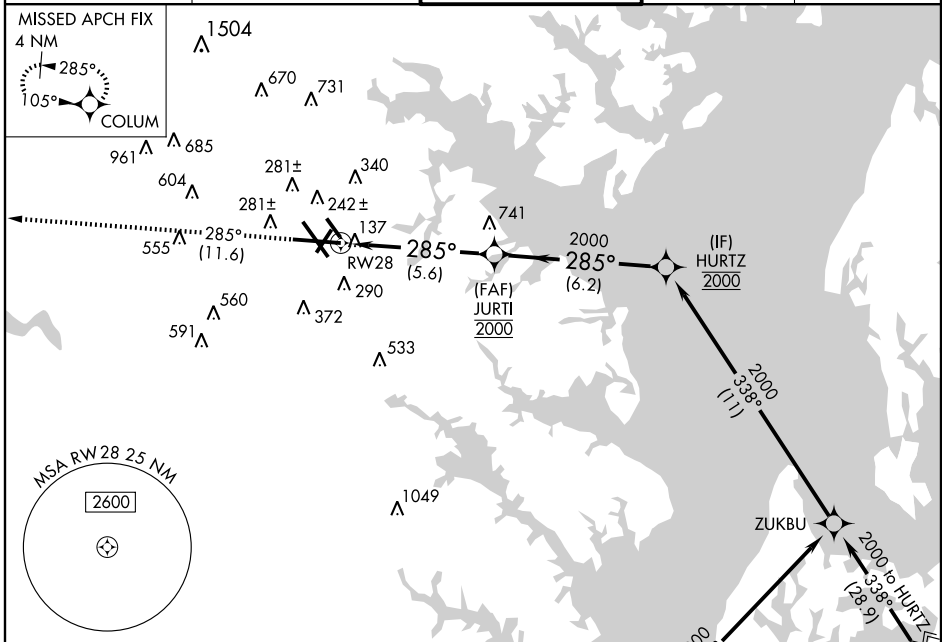
BALTIMORE/WASHINGTON INTL THURGOOD MARSHALL (BWI)

APP CRS <b>285°</b>	Rwy ldg TDZE Apt Elev	<b>10002</b> <b>142</b> <b>146</b>
------------------------	-----------------------------	--

**▼** For inoperative MALSRS, increase RNP 0.30 all Cats visibility to RVR 6000. GPS Required. For uncompensated Baro-VNAV systems, procedure NA below -13°C (9°F) or above 48°C (118°F).

**MALSRS** MISSED APPROACH: Climb to 2500 via track 285° to COLUM and hold.

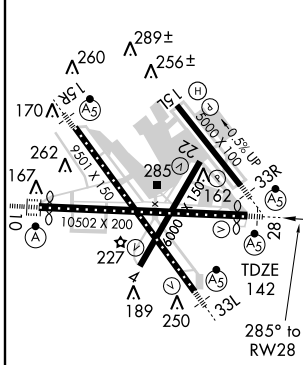
ATIS <b>115.1 127.8</b>	POTOMAC APP CON <b>119.7 290.475</b>	BALTIMORE TOWER <b>119.4 257.8</b>	GND CON <b>121.9</b>	CLNC DEL <b>118.05</b>
----------------------------	---	---------------------------------------	-------------------------	---------------------------



NE-3, 11 MAR 2010 to 08 APR 2010

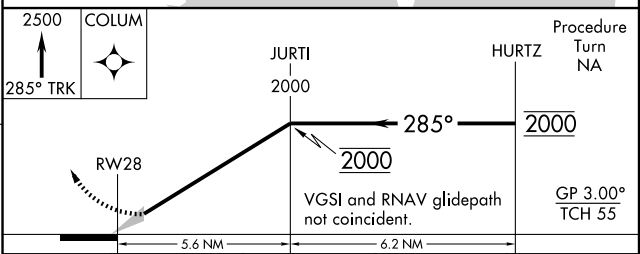
NE-3, 11 MAR 2010 to 08 APR 2010

ELEV 146	<b>D</b>
----------	----------



TDZ/CL Rwy 10 and 33L  
REIL Rwy 4, 22, 15L, and 33R  
HIRL all rwy

Procedure NA for arrivals at RAVNN via V379 Westbound. (IAF) RAVNN 6000



CATEGORY	A	B	C	D
RNP 0.30 DA		493/40	351 (400-¾)	

**SPECIAL AIRCRAFT & AIRCREW AUTHORIZATION REQUIRED**

# RNAV (RNP) Z RWY 28