

WAAS CH 82207 W33A	APP CRS 335°	Rwy Idg TDZE 142 Apt Elev 146	9501 142 146
--	------------------------	---	---

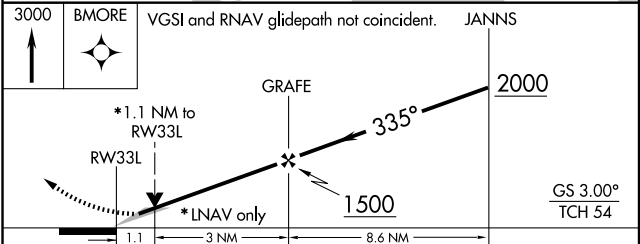
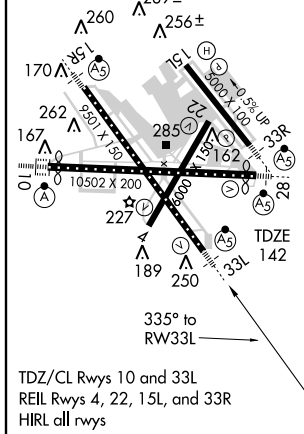
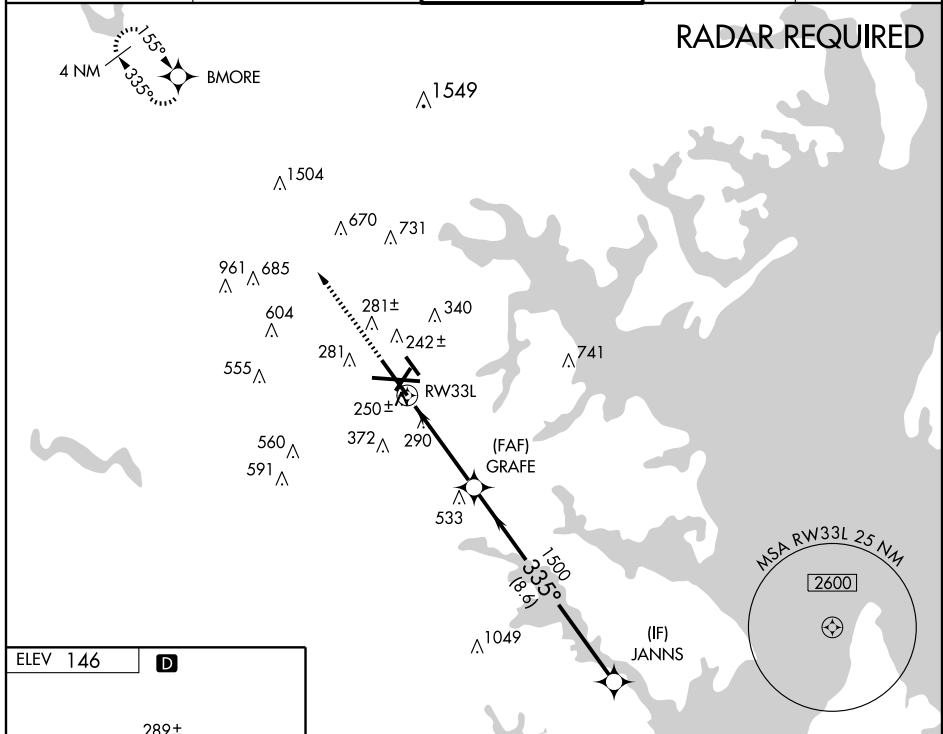
RNAV (GPS) Y RWY 33L

BALTIMORE/ WASHINGTON INTL THURGOOD MARSHALL (BWI)

▼ For inoperative MALSR, increase LNAV Cat D visibility to RVR 6000.
For uncompensated Baro-VNAV systems, LNAV/VNAV NA below -15°C (5°F) or above 48°C (118°F). DME/DME RNP-0.3 NA.

MALSR
 MISSED APPROACH: Climb to 3000 direct BMORE and hold.

ATIS 115.1 127.8	POTOMAC APP CON 119.7 290.475	BALTIMORE TOWER 119.4 257.8	GND CON 121.9	CLNC DEL 118.05
----------------------------	---	---------------------------------------	-------------------------	---------------------------



CATEGORY	A	B	C	D
LPV DA		342/24	200 (200-1/2)	
LNAV/VNAV DA		510/40	368 (400-3/4)	
LNAV MDA		540/24	398 (400-1/2)	540/50 398 (400-1)
CIRCLING	640-1	494 (500-1)	640-1 1/2 494 (500-1 1/2)	740-2 594 (600-2)

NE-3, 11 MAR 2010 to 08 APR 2010

NE-3, 11 MAR 2010 to 08 APR 2010