

VOR RWY 6

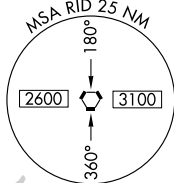
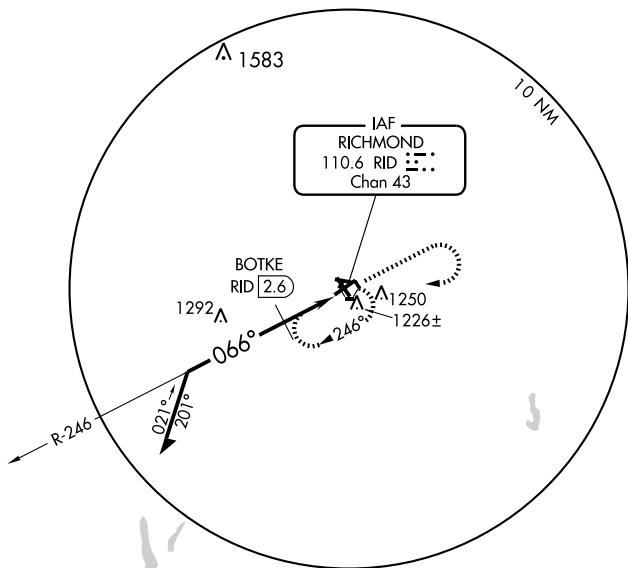
RICHMOND MUNI (RID)

VORTAC RID 110.6 Chan 43	APP CRS 066°	Rwy Idg 5200 TDZE 1137 Apt Elev 1140
--	------------------------	---

NA When local altimeter setting not received, use James M Cox Dayton Intl altimeter setting and increase all MDA 100 feet. Increase S-6 Cat C, D and Circling Cat C visibility 1/4 mile. Increase BOTKE fix minimums S-6 Cat C, D visibility 1/4 mile. VDP NA when using James M Cox Dayton Intl altimeter setting.

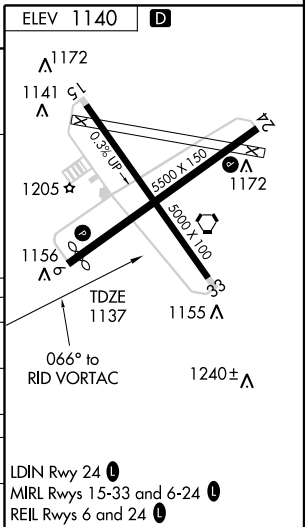
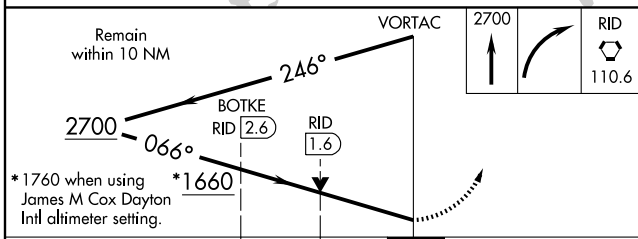
MISSED APPROACH:
Climb to 2700 then right turn direct RID VORTAC and hold.

AWOS-3 121.225	DAYTON APP CON 134.45 352.05	CLNC DEL 133.55	UNICOM 122.7 (CTAF)
--------------------------	--	---------------------------	-------------------------------



EC-2, 11 MAR 2010 to 08 APR 2010

EC-2, 11 MAR 2010 to 08 APR 2010



CATEGORY	A	B	C	D
S-6	1660-1	523 (600-1)	1660-1½ 523 (600-1½)	1660-1¾ 523 (600-1¾)
CIRCLING	1660-1	520 (600-1)	1660-1½ 520 (600-1½)	1700-2 560 (600-2)
BOTKE FIX MINIMUMS				
S-6	1500-1 363 (400-1)		1500-1¼ 363 (400-1¼)	
CIRCLING	1600-1	460 (500-1)	1600-1½ 460 (500-1½)	1700-2 560 (600-2)