

LAFAYETTE, LOUISIANA

AL-865 (FAA)

RNAV (GPS) RWY 22L

LAFAYETTE RGNL (LFT)

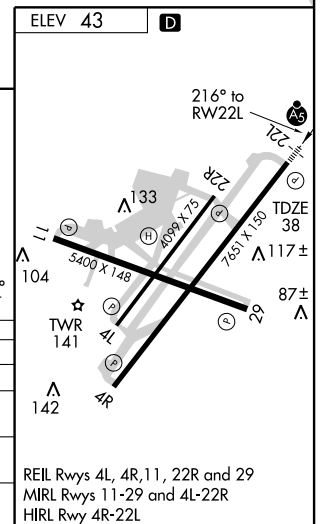
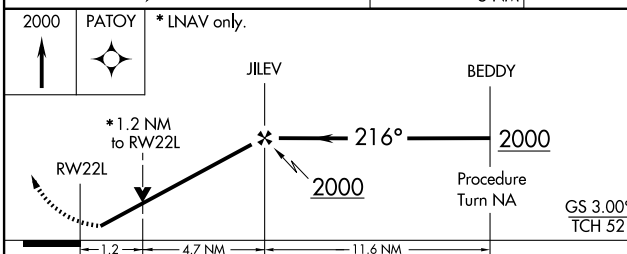
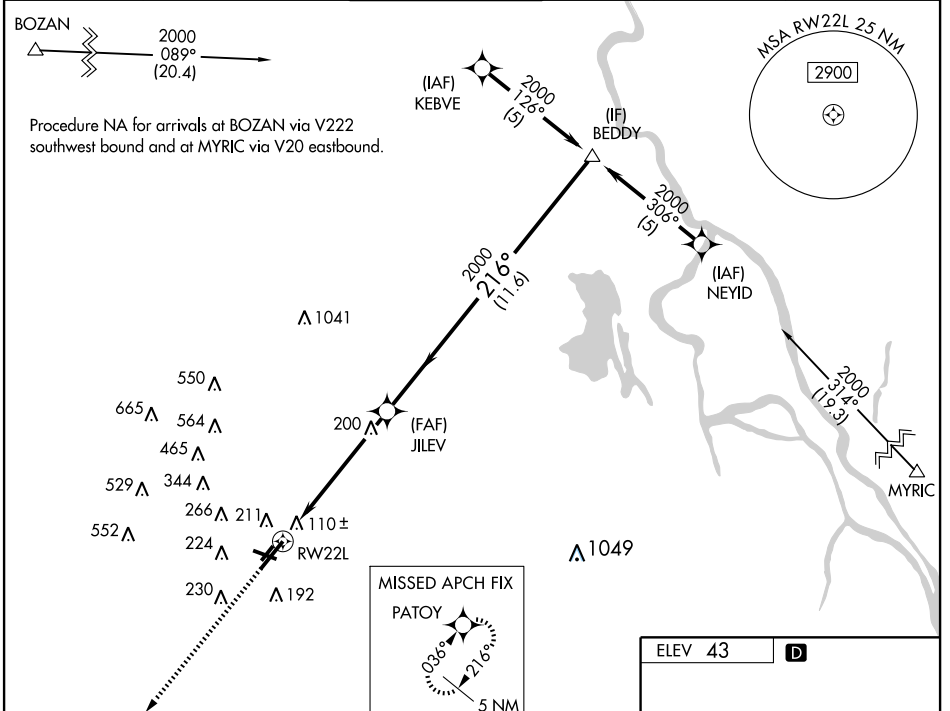
WAAS CH 50503 W22A	APP CRS 216°	Rwy Idg TDZE 38 Apt Elev 43	7651
--	------------------------	---	-------------

▽ For uncompensated Baro-VNAV systems, LNAV/VNAV NA below-15°C (5°F) or above 49°C (120°F). If local altimeter setting not received, use Acadiana Rgnl altimeter setting and increase all DAs 29 feet and all MDAs 40 feet. VDP and Baro-VNAV NA when using Acadiana Rgnl altimeter setting. For inoperative MALSR, increase LNAV Cat A and B visibility to RVR 5000. Visibility reduction by helicopters NA. DME/DME RNP-0.3 NA.

▲ ASR

MALSR AS	MISSED APPROACH: Climb to 2000 direct PATOY and hold.
--------------------	---

ATIS 134.05	LAFAYETTE APP CON * 121.1 363.0	LAFAYETTE TOWER * 118.5 (CTAF) 0 257.8	GND CON 121.8	CLNC DEL 125.55	UNICOM 122.95
-----------------------	---	--	-------------------------	---------------------------	-------------------------



CATEGORY	A	B	C	D
LPV DA		313/40	275 (300-¾)	
LNAV/VNAV DA		511/60	473 (500-1¼)	
LNAV MDA		480/40 442 (500-¾)		480/50 442 (500-1)
CIRCLING	540-1 497 (500-1)	580-1 537 (600-1)	580-1½ 537 (600-1½)	660-2 618 (700-2)

LAFAYETTE, LOUISIANA
Orig-A 09015

30°12'N-91°59'W

RNAV (GPS) RWY 22L

LAFAYETTE RGNL (LFT)

SC-4, 19 NOV 2009 to 17 DEC 2009

SC-4, 19 NOV 2009 to 17 DEC 2009