

RNAV (GPS) RWY 4R

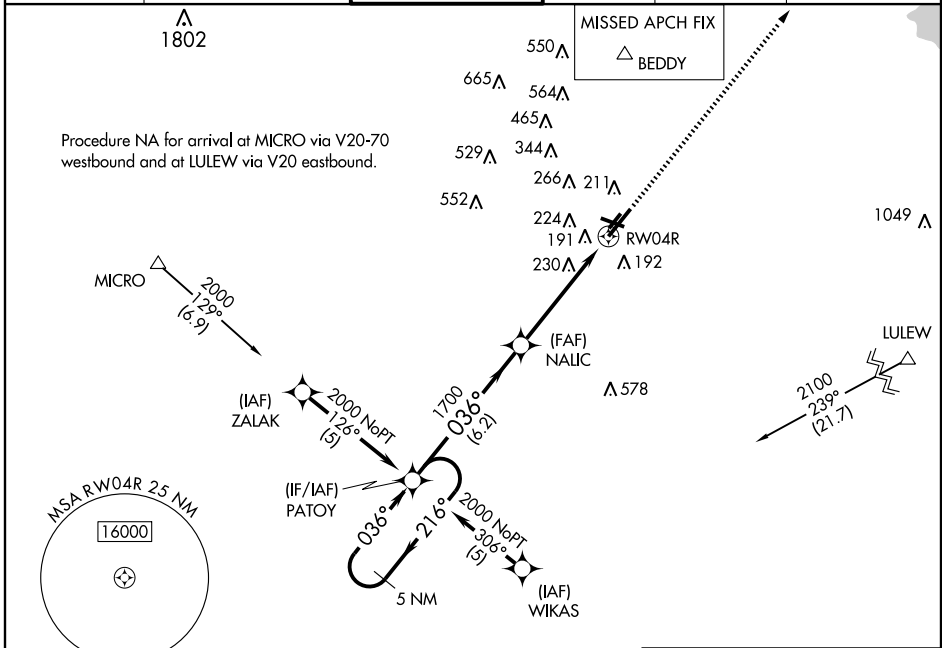
LAFAYETTE RGNL (LFT)

WAAS CH 45903 W04A	APP CRS 036°	Rwy Idg TDZE 40 Apt Elev 43	7651
---------------------------------	------------------------	---	-------------

▲ For uncompensated Baro-VNAV systems, LNAV/VNAV NA below-15°C (5°F) or above 48°C (118°F).
▲ DME/DME RNP-0.3 NA. If local altimeter setting not received, use Acadiana Rgnl altimeter setting and increase all DAs 29 feet and all MDAs 40 feet. VDP and BARO-VNAV NA when using Acadiana ASR Rgnl altimeter setting. Visibility reduction by helicopters NA.

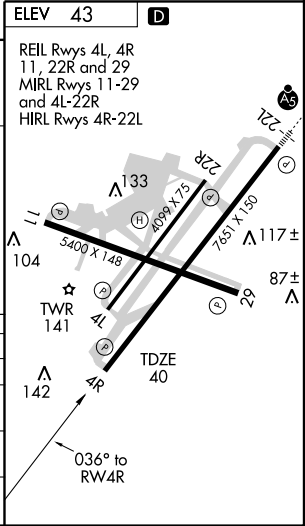
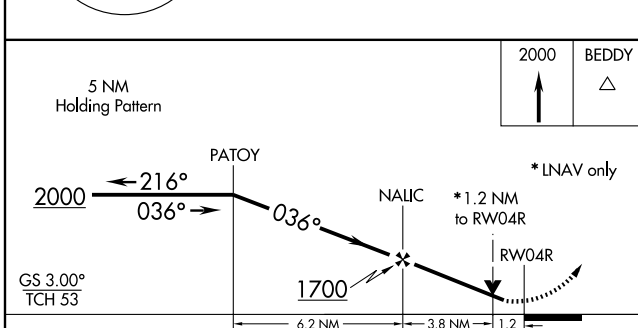
MISSED APPROACH: Climb to 2000 direct BEDDY.

ATIS 134.05	LAFAYETTE APP CON * 121.1 363.0	LAFAYETTE TOWER * 118.5 (CTAF) 0 257.8	GND CON 121.8	CLNC DEL 125.55	UNICOM 122.95
-----------------------	---	--	-------------------------	---------------------------	-------------------------



SC-4, 11 MAR 2010 to 08 APR 2010

SC-4, 11 MAR 2010 to 08 APR 2010



CATEGORY	ELEV 43			
	A	B	C	D
LPV DA	344-1 304 (400-1)			
LNAV/VNAV DA	537-1¾ 497 (500-1¾)			
LNAV MDA	480-1 440 (500-1)	480-1¼ 440 (500-1¼)	480-1½ 440 (500-1½)	
CIRCLING	540-1 497 (500-1)	580-1 537 (600-1)	580-1½ 537 (600-1½)	660-2 618 (700-2)

RNAV (GPS) RWY 4R

LAFAYETTE RGNL (LFT)