

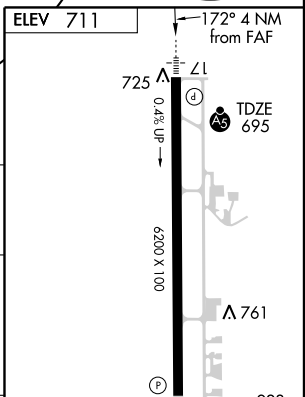
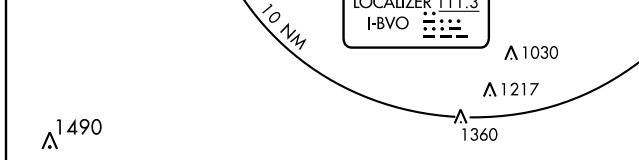
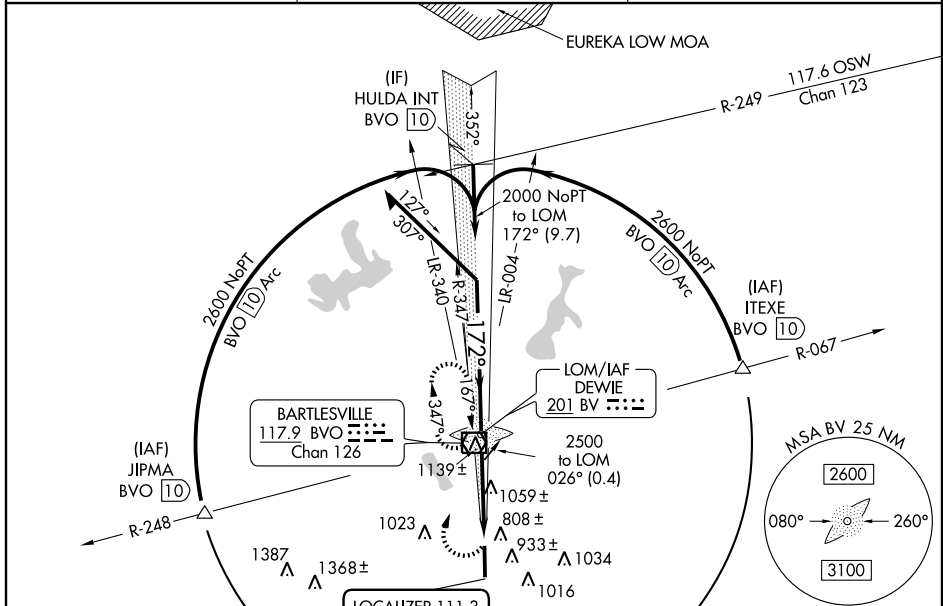
LOC RWY 17

BARTLESVILLE MUNI (BVO)

LOC I-BVO 111.3	APP CRS 172°	Rwy Idg 6200
		TDZE 695
		Apt Elev 711

<p>NA For inoperative MALS, increase S-17 Cats A and B visibility to 1 mile. Circling NA east of Rwy 17-35. Visibility reduction by helicopters NA. When local altimeter setting not received, use Tulsa Intl altimeter setting and increase all MDAs 100 feet and S-17 Cat C/D visibilities 1/4 mile, circling Cat B/C/D visibilities 1/2 mile.</p>	<p>MALS</p>	<p>MISSED APPROACH: Climbing right turn to 2500 direct BVO VOR/DME and hold, continue climb-in-hold to 2500.</p>
---	--------------------	---

<p>AWOS 132.675</p>	<p>KANSAS CITY CENTER 128.8 354.1</p>	<p>UNICOM 123.0 (CTAF)</p>
---------------------------------------	---	--



Remain within 10 NM	DEWIE LOM	2500	BVO 117.9
352°	172°	2000	2.97° TCH 53
4 NM			

CATEGORY	A	B	C	D	MIRL Rwy 17-35	REIL Rwy 35
S-17	1320-3/4	625 (700-3/4)	1320-1 1/4	625 (700-1 1/4)	1320-1 1/2	625 (700-1 1/2)
CIRCLING	1400-1	689 (700-1)	1400-2	689 (700-2)	1400-2 1/4	689 (700-2 1/4)

SC-1, 11 MAR 2010 to 08 APR 2010

SC-1, 11 MAR 2010 to 08 APR 2010