

BARTLESVILLE, OKLAHOMA

AL-867 (FAA)

VOR/DME BVO <b>117.9</b> Chan <b>126</b>	APP CRS <b>348°</b>	Rwy ldg <b>6200</b> TDZE <b>711</b> Apt Elev <b>711</b>
------------------------------------------------	------------------------	---------------------------------------------------------------

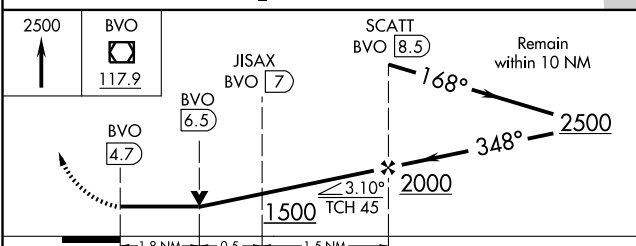
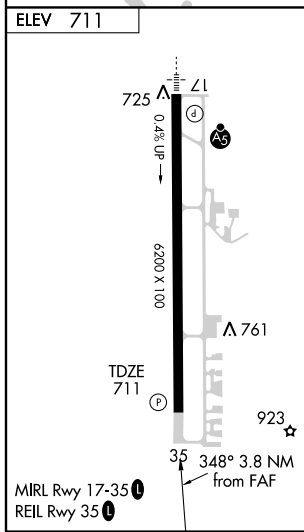
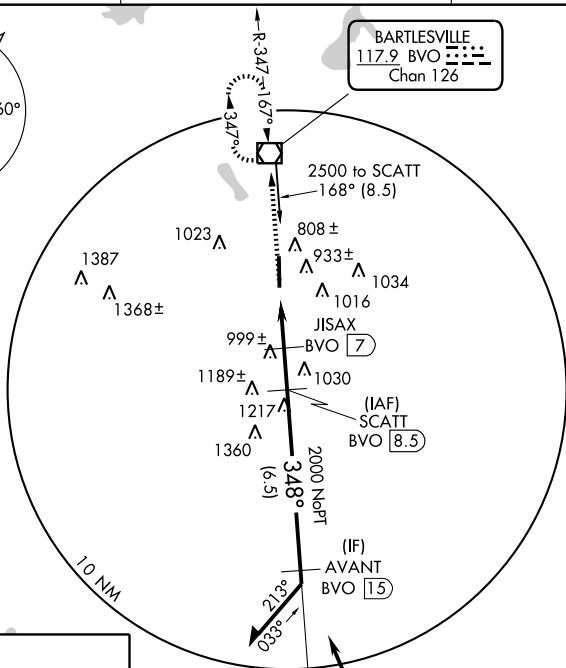
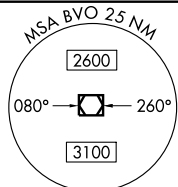
# VOR/DME RWY 35

BARTLESVILLE MUNI (BVO)

**⚠** Circling NA east of Rwy 17-35. When local altimeter setting not received, use Tulsa Intl altimeter setting and increase all MDAs 100 feet and S-35 Cat C/D visibility ¼ mile, Circling Cat B/C/D visibility ¼ mile. VDP NA when using Tulsa Intl altimeter setting.

**MISSED APPROACH:** Climb to 2500 direct BVO VOR/DME and hold.

AWOS <b>132.675</b>	KANSAS CITY CENTER <b>128.8 354.1</b>	UNICOM <b>123.0 (CTAF) 0</b>
------------------------	------------------------------------------	---------------------------------



CATEGORY	A	B	C	D
S-35	1320-1 609 (700-1)		1320-1¾ 609 (700-1¾)	1320-2 609 (700-2)
CIRCLING	1400-1 689 (700-1)		1400-2 689 (700-2)	1400-2½ 689 (700-2½)

BARTLESVILLE, OKLAHOMA  
Amdt 6 09183

36°46' N-96°01' W

# BARTLESVILLE MUNI (BVO) VOR/DME RWY 35

SC-1, 11 MAR 2010 to 08 APR 2010

SC-1, 11 MAR 2010 to 08 APR 2010