

# RNAV (GPS) RWY 30

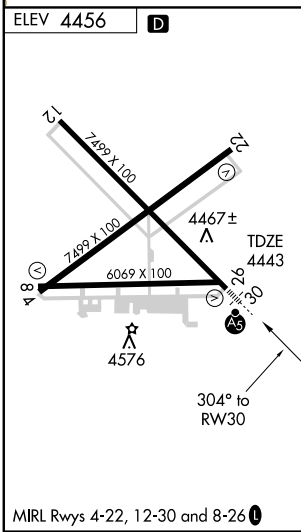
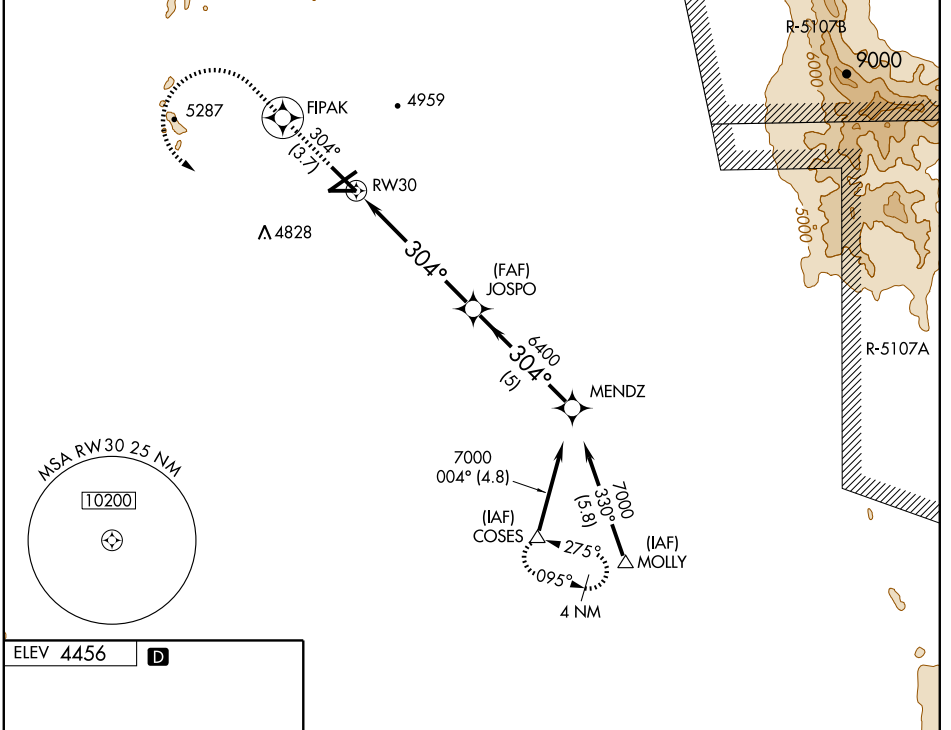
LAS CRUCES INTL (LRU)

APP CRS <b>304°</b>	Rwy Idg <b>7499</b>
	TDZE <b>4443</b>
	Apt Elev <b>4456</b>

**NA** Baro-VNAV NA below -1.5°C (5°F).  
GPS or RNP-0.3 required. DME/DME RNP-0.3 NA.  
For inoperative MALSRS increase LNAV Cat D visibility to 1¼.  
If local altimeter setting not received, procedure NA.

**MALSRS**  
**AS**  
MISSED APPROACH: Climb to 5100 via 304° course to FIPAK WP then climbing left turn to 9000 direct COSES WP and hold.

AWOS-3 <b>119.025</b>	ALBUQUERQUE CENTER <b>128.2 285.5</b>	UNICOM <b>122.7 (CTAF)</b>
--------------------------	--	-------------------------------



5100	FIPAK	9000	COSES	MENDZ
↑ 304°	⊙	↶	△	
* LNAV only				
RW30		* 1.1 NM to RW30		JOSP0
1.1 NM		4.8 NM		5 NM
MENDZ 7000				
Procedure Turn NA				
GS 3.00° TCH 47				
CATEGORY	A	B	C	D
GLS PA DA	NA			
LNAV/VNAV DA	4780-¾ 337 (400-¾)			
LNAV MDA	4840-½ 397 (400-½)			4840-1 397 (400-1)
CIRCLING	4940-1¼ 484 (500-1¼)	4940-1½ 484 (500-1½)		5020-2 564 (600-2)

SW-1, 19 NOV 2009 to 17 DEC 2009

SW-1, 19 NOV 2009 to 17 DEC 2009