

WAAS CH 61315 W14A	APP CRS 137°	Rwy Idg 4999
		TDZE 292
		Apt Elev 294

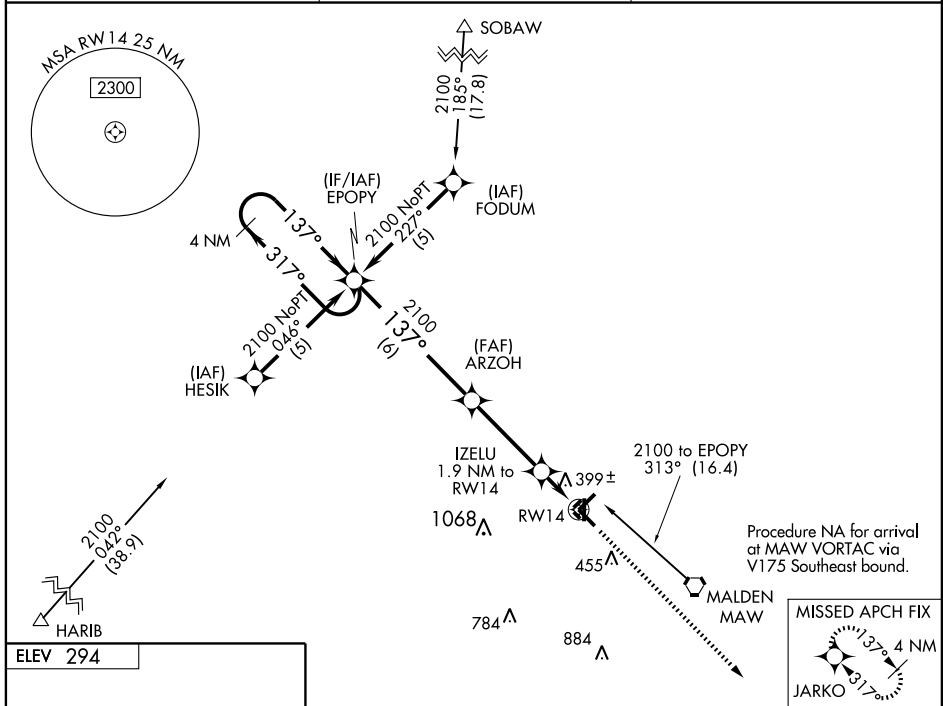
RNAV (GPS) RWY 14

MALDEN RGNL (MAW)

⚠ DME/DME RNP-0.3 NA. When local altimeter setting not received, use Poplar Bluff altimeter setting and increase all DA 50 feet, all MDA 60 feet, LNAV/VNAV all Cats and LNAV Cat C visibilities ¼ mile. For uncompensated Baro-VNAV systems, LNAV/VNAV NA below -15°C (5°F) or above 54°C (130°F). Baro-VNAV and VDP NA when using Poplar Bluff altimeter setting.

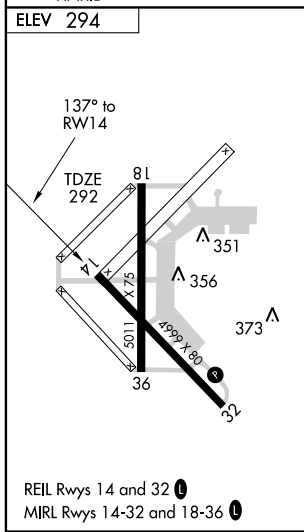
⚠ NA MISSED APPROACH: Climb to 2100 direct JARKO and hold.

AWOS-3 119.825	MEMPHIS CENTER 133.65 292.15	UNICOM 122.8 (CTAF) 0
--------------------------	--	---------------------------------



NC-3, 11 MAR 2010 to 08 APR 2010

NC-3, 11 MAR 2010 to 08 APR 2010



	EPOPY		ARZOH		IZELU 1.9 NM to RW14		*LNAV Only	
	4 NM Holding Pattern							
	2100 ← 317°		137° →		2100		*920	
	GS 3.00° TCH 40							
	6 NM		3.6 NM		0.9		1 NM	
CATEGORY	A		B		C		D	
LPV DA	542-1		250 (300-1)				NA	
LNAV/VNAV DA	698-1½		406 (500-1½)				NA	
LNAV MDA	660-1		368 (400-1)				NA	
CIRCLING	720-1 426 (500-1)		820-1 526 (600-1)		820-1½ 526 (600-1½)		NA	