

VORTAC MAW <b>111.2</b> Chan <b>49</b>	APP CRS <b>298°</b>	Rwy Idg TDZE Apt Elev	<b>4999</b> <b>292</b> <b>294</b>
--	------------------------	-----------------------------	---

# VOR RWY 32

MALDEN RGNL (MAW)

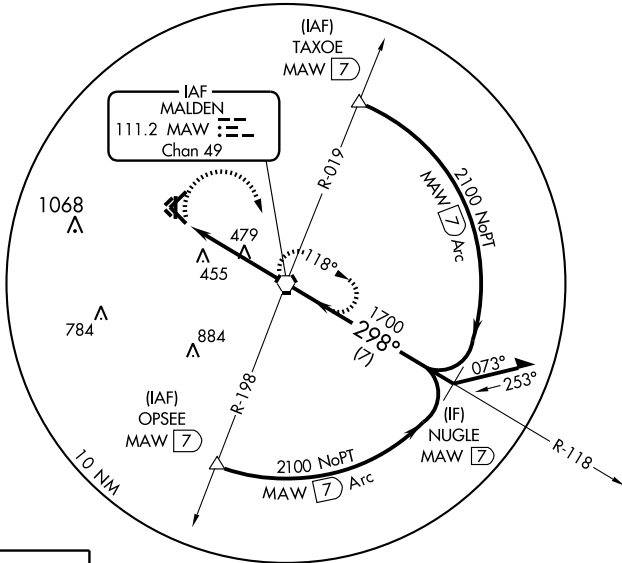
▼ Visibility reduction by helicopters NA.  
 ▲ NA When local altimeter setting not received, use Poplar Bluff altimeter setting and increase all MDA 60 feet and S-32 Cat C visibility ¼ mile.

MISSED APPROACH: Climbing right turn to 2100 direct MAW VORTAC and hold.

AWOS-3 <b>119.825</b>	MEMPHIS CENTER <b>133.65 292.15</b>	UNICOM <b>122.8</b> (CTAF) <b>0</b>
--------------------------	--	--

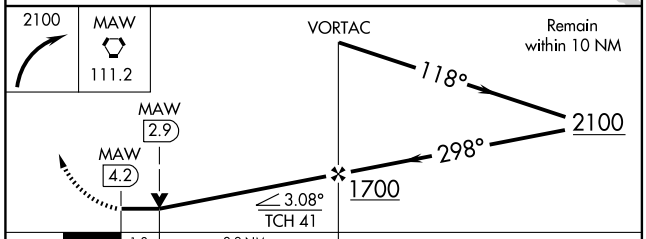
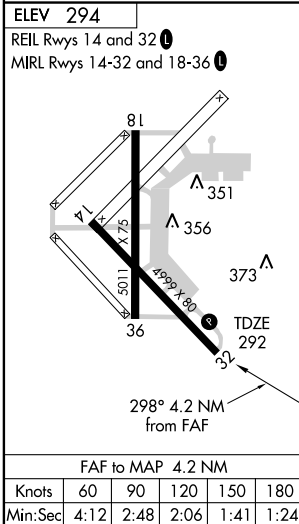
MSA MAW 25 NM

2300



NC-3, 11 MAR 2010 to 08 APR 2010

NC-3, 11 MAR 2010 to 08 APR 2010



CATEGORY	A	B	C	D
S-31	740-1 448 (500-1)		740-1¼ 448 (500-1¼)	NA
CIRCLING	740-1 446 (500-1)	820-1 526 (600-1)	820-1½ 526 (600-1½)	NA