

VORTAC MAW <b>111.2</b> Chan <b>49</b>	APP CRS <b>120°</b>	Rwy Idg <b>4999</b> TDZE <b>292</b> Apt Elev <b>294</b>
--	------------------------	--

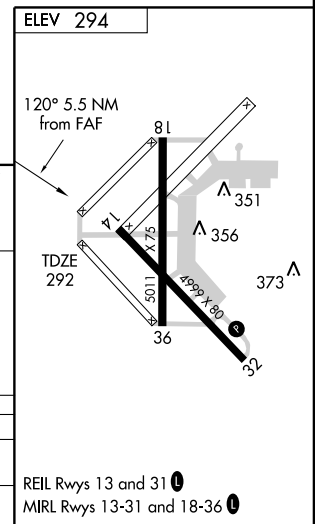
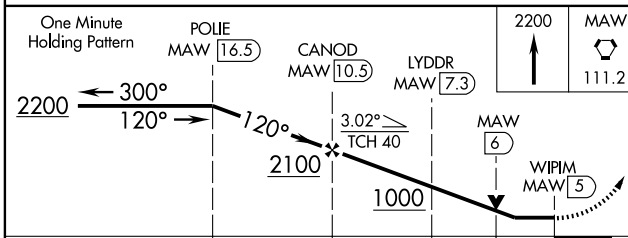
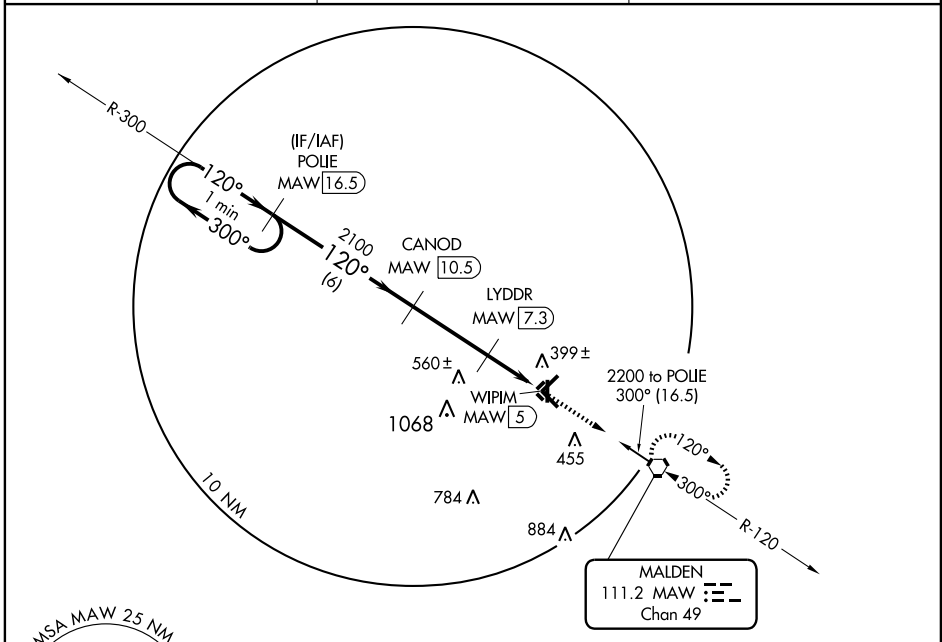
# VOR/DME RWY 14

MALDEN RGNL (MAW)

**NA** When local altimeter setting not received, use Poplar Bluff altimeter setting and increase all MDA 60 feet and S-14 Cat C visibility ¼ mile. VDP NA when using Poplar Bluff altimeter setting.

**MISSED APPROACH:** Climb to 2200 direct MAW VORTAC and hold, continue climb-in-hold to 2200.

AWOS-3 <b>119.825</b>	MEMPHIS CENTER <b>133.65 292.15</b>	UNICOM <b>122.8</b> (CTAF) <b>0</b>
--------------------------	--	--



CATEGORY	A	B	C	D
S-14	660-1	368 (400-1)		NA
CIRCLING	720-1 426 (500-1)	820-1 526 (600-1)	820-1½ 526 (600-1½)	NA

NC-3, 11 MAR 2010 to 08 APR 2010

NC-3, 11 MAR 2010 to 08 APR 2010