

WAAS CH <b>78315</b> <b>W18A</b>	APP CRS <b>182°</b>	Rwy Idg TDZE Apt Elev	<b>5011</b> <b>294</b> <b>294</b>
--	------------------------	-----------------------------	---

# RNAV (GPS) RWY 18

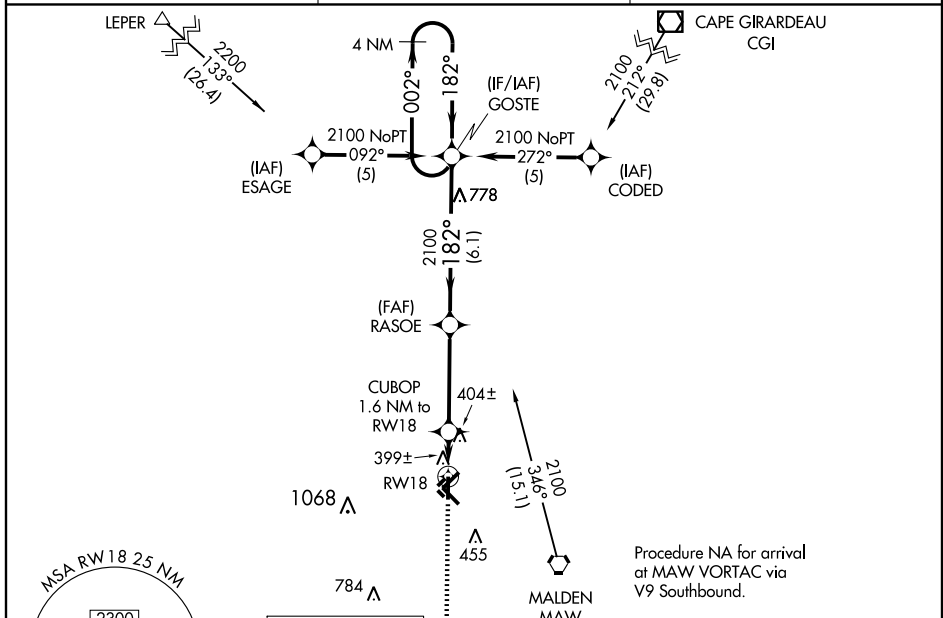
MALDEN RGNL (MAW)

**⚠** DME/DME RNP-0.3 NA. For uncompensated Baro-VNAV systems, LNAV/VNAV NA below -15°C (5°F) or above 54°C (130°F). Baro-VNAV and VDP NA when using Poplar Bluff altimeter setting.

**⚠** NA When local altimeter setting not received, use Poplar Bluff altimeter setting and increase all DA 50 feet, all MDA 60 feet, LNAV/VNAV all Cats and LNAV Cat C visibility ¼ mile.

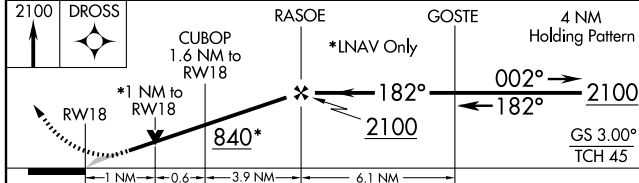
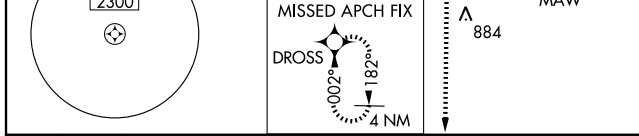
**MISSED APPROACH:** Climb to 2100 direct DROSS and hold.

AWOS-3 <b>119.825</b>	MEMPHIS CENTER <b>133.65 292.15</b>	UNICOM <b>122.8 (CTAF) 0</b>
--------------------------	--	---------------------------------

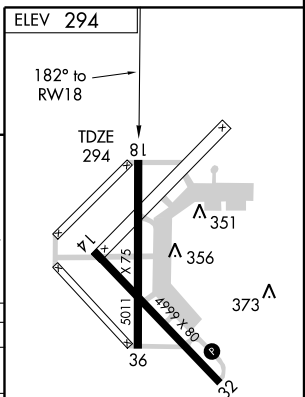


NC-3, 11 MAR 2010 to 08 APR 2010

NC-3, 11 MAR 2010 to 08 APR 2010



CATEGORY	A	B	C	D
LPV DA	544-1	250 (300-1)		NA
LNAV/VNAV DA	669-1 ¼	375 (400-1 ¼)		NA
LNAV MDA	660-1	366 (400-1)		NA
CIRCLING	720-1 426 (500-1)	820-1 526 (600-1)	820-1 ½ 526 (600-1 ½)	NA



REIL Rwy 14 and 32 0

MIRL Rwy 14-32 and 18-36 0