

RNAV (GPS) RWY 7

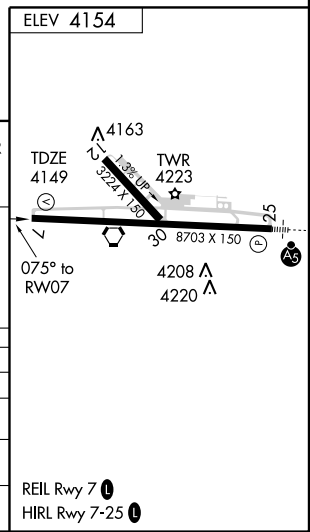
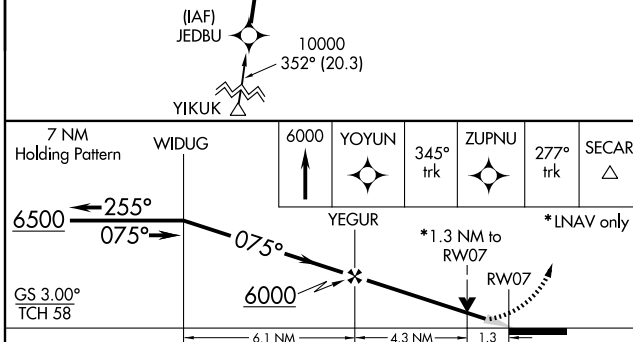
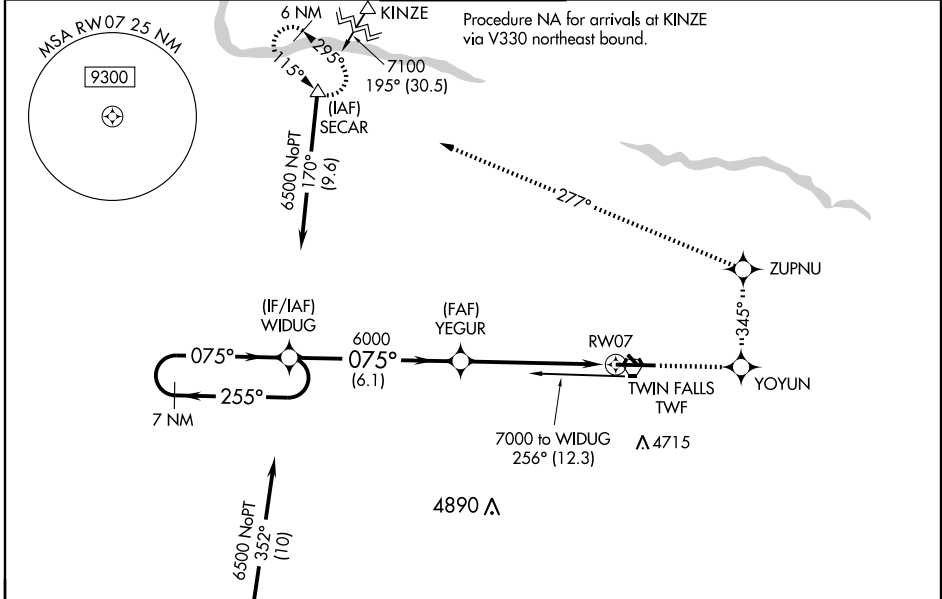
TWIN FALLS/JOSLIN FIELD-MAGIC VALLEY RGNL (TWF)

WAAS CH 40211 W07A	APP CRS 075°	Rwy Idg TDZE 4149 Apt Elev 4154	8703 4149 4154
--	------------------------	---	---

⚠ Baro-VNAV NA when using Jerome altimeter setting.
⚠ For uncompensated Baro-VNAV systems, LNAV/VNAV NA below -23°C (-9°F) or above 40°C (104°F). DME/DME RNP-0.3 NA.
 When local altimeter setting not received, use Jerome altimeter setting and increase all DA/MDA 60 feet and increase LPV and LNAV/VNAV all Cats, and LNAV Cats C and D visibility ¼ mile. VDP NA when using Jerome altimeter setting.

MISSED APPROACH: Climb to 6000 direct YOYUN and via 345° track to ZUPNU and via 277° track to SECAR and hold.

ASOS 135.025	TWIN FALLS APP CON* 126.7 353.75	TWIN FALLS TOWER* 118.2 (CTAF) 0 317.5	GND CON 121.7	UNICOM 122.95
------------------------	--	---	-------------------------	-------------------------



7 NM Holding Pattern	WIDUG	6000	YOYUN	345° trk	ZUPNU	277° trk	SECAR
6500	← 255°	← 075°	← 075°	← 075°	← 075°	← 075°	← 075°
GS 3.00° TCH 58	6.1 NM	4.3 NM	1.3 NM	*1.3 NM to RWY 7 *LNAV only			
CATEGORY	A	B	C	D			
LPV DA	4399-3/4		250 (300-3/4)				
LNAV/VNAV DA	4668-1 3/4		519 (600-1 3/4)				
LNAV MDA	4620-1	471 (500-1)	4620-1 1/4 471 (500-1 1/4)	4620-1 1/2 471 (500-1 1/2)			
CIRCLING	4680-1 526 (600-1)	4720-1 566 (600-1)	4740-1 1/2 586 (600-1 1/2)	4800-2 646 (700-2)			

RNAV (GPS) RWY 7

NW-1, 11 MAR 2010 to 08 APR 2010

NW-1, 11 MAR 2010 to 08 APR 2010