

VOR RWY 7

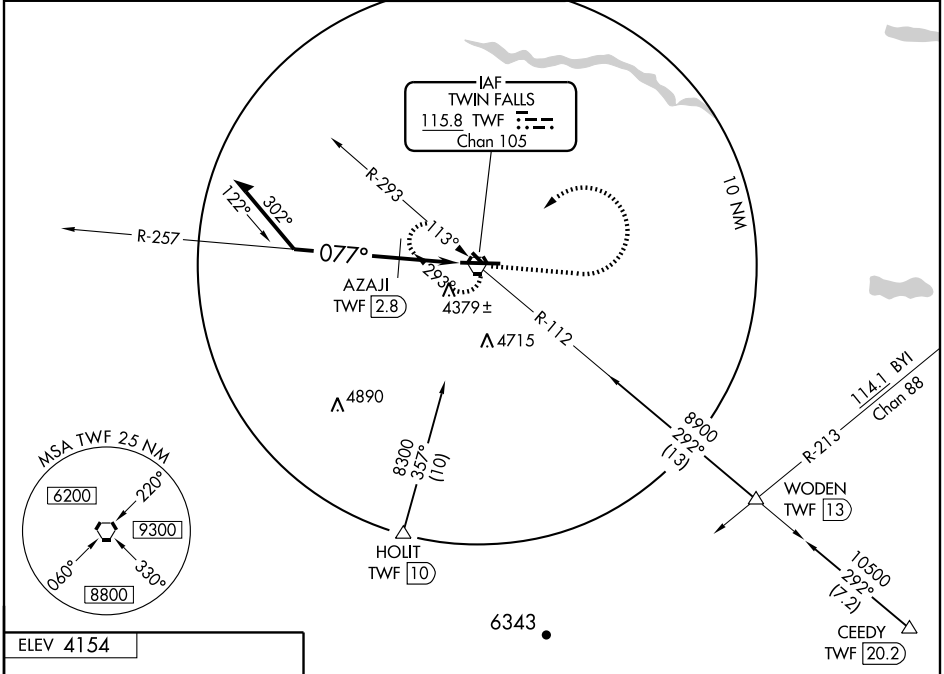
TWIN FALLS/JOSLIN FIELD-MAGIC VALLEY RGNL (TWF)

VORTAC TWF 115.8 Chan 105	APP CRS 077°	Rwy Idg 8703 TDZE 4149 Apt Elev 4154
---	------------------------	--

When local altimeter setting not received, use Jerome altimeter setting and increase all MDA 60 feet and visibility Cat C and D ¼ mile.
VDP NA when using Jerome altimeter setting.

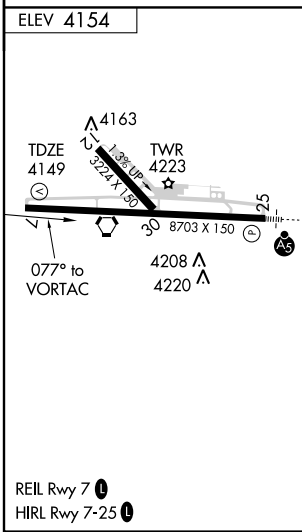
MISSED APPROACH: Climb to 6000 then left turn direct TWF VORTAC and hold.

ASOS 135.025	TWIN FALLS APP CON* 126.7 353.75	TWIN FALLS TOWER* 118.2 (CTAF) 317.5	GND CON 121.7	UNICOM 122.95
------------------------	--	---	-------------------------	-------------------------



NW-1, 11 MAR 2010 to 08 APR 2010

NW-1, 11 MAR 2010 to 08 APR 2010



CATEGORY	A	B	C	D
S-7	4920-1 771 (800-1)	4920-1¼ 771 (800-1¼)	4920-2¼ 771 (800-2¼)	4920-2½ 771 (800-2½)
CIRCLING	4920-1 766 (800-1)	4920-1¼ 766 (800-1¼)	4920-2¼ 766 (800-2¼)	4920-2½ 766 (800-2½)

AZAJI FIX MINIMUMS				
S-7	4640-1	491 (500-1)	4640-1¼ 491 (500-1¼)	4640-1½ 491 (500-1½)
CIRCLING	4680-1 526 (600-1)	4720-1 566 (600-1)	4740-1½ 586 (600-1½)	4800-2 646 (700-2)