

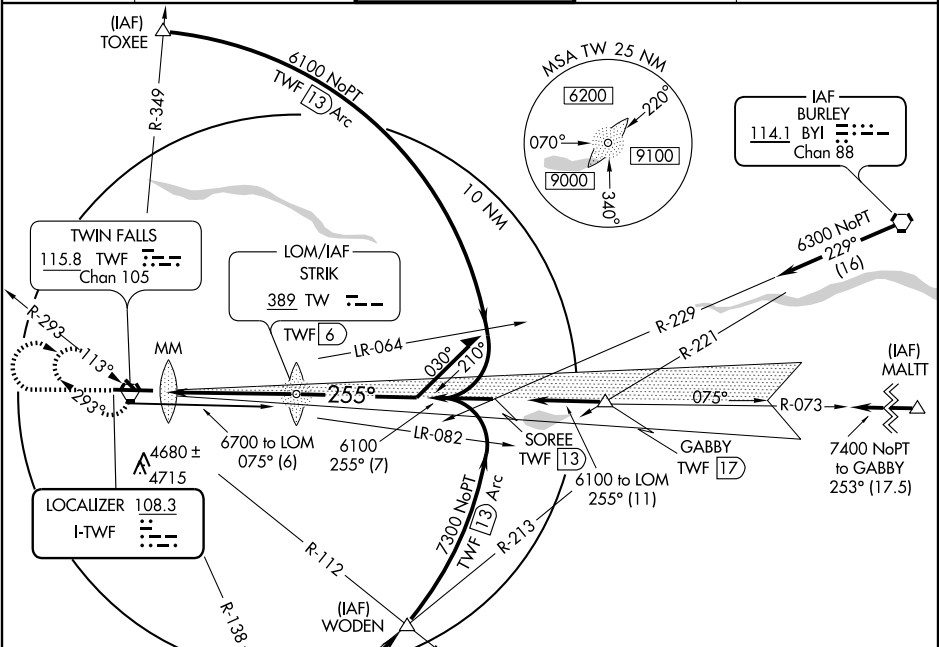
# ILS RWY 25

TWIN FALLS/JOSLIN FIELD-MAGIC VALLEY RGNL (TWF)

LOC I-TWF <b>108.3</b>	APP CRS <b>255°</b>	Rwy ldg <b>8703</b> TDZE <b>4151</b> Apt Elev <b>4151</b>
---------------------------	------------------------	---

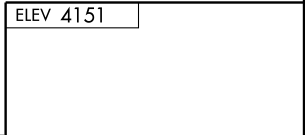
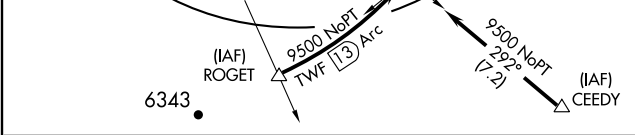
<p><b>⚠</b> For inoperative MALS/R, increase S-ILS Cat. E visibility to 1 mile and S-LOC Cat. D and E to 1 mile.</p>	<p>MALS/R</p>	<p>MISSED APPROACH: Climb to 5000 then climbing right turn to 6700 direct TWF VORTAC and hold.</p>
--	---------------	--

ASOS <b>135.025</b>	TWIN FALLS APP CON * <b>126.7 353.75</b>	TWIN FALLS TOWER * <b>118.2 (CTAF) 0 317.5</b>	GND CON <b>121.7</b>	UNICOM <b>122.95</b>
------------------------	---	---	-------------------------	-------------------------



NW-1, 19 NOV 2009 to 17 DEC 2009

NW-1, 19 NOV 2009 to 17 DEC 2009



5000	6700	TWF	LOM	Remain
↑	↷	115.8	TWF 6	within 15 NM
			5879	
			075°	
			255°	
			6100	
			6100	
			GS 3.00°	
			TCH 55	

CATEGORY	A	B	C	D	E
S-ILS 25	4351-½ 200 (200-½)				
S-LOC 25	4420-½ 269 (300-½)		4420-¾ 269 (300-¾)		
CIRCLING	4680-1 529 (600-1)		4680-1½ 529 (600-1½)	4760-2 609 (700-2)	5040-3 889 (900-3)

REIL Rwy 7 **0**  
HIRL Rwy 7-25 **0**

FAF to MAP 5.2 NM

Knots	60	90	120	150	180
Min:Sec	5:12	3:28	2:36	2:05	1:44

# ILS RWY 25