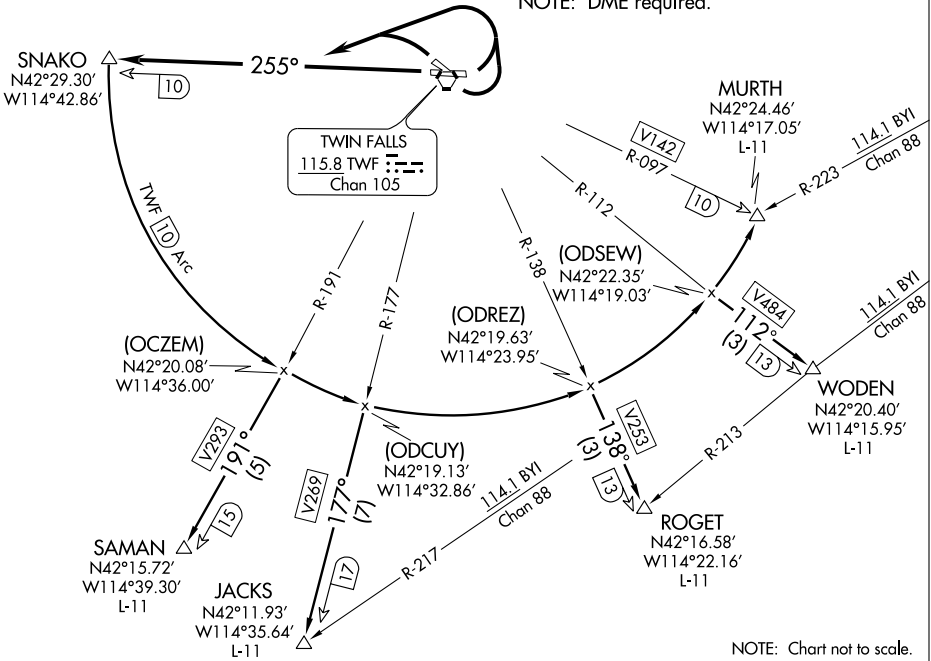


SNAKO ONE DEPARTURE

GND CON
121.7
TWIN FALLS TOWER*
118.2 317.5
TWIN FALLS DEP CON*
126.7 353.75
ASOS 135.025

NOTE: ROGET transition requires a minimum climb of 290' per NM to 7600'.
NOTE: MURTH transition requires a minimum climb of 210' per NM to 10500'.
NOTE: DME required.



NOTE: Chart not to scale.

NW-1, 11 MAR 2010 to 08 APR 2010

NW-1, 11 MAR 2010 to 08 APR 2010

DEPARTURE ROUTE DESCRIPTION

TAKE-OFF RUNWAY 25: Climb runway heading, thence. . .

TAKE-OFF RUNWAYS 7, 30, 12: Climbing left turn, thence. . .

. . . intercept and proceed via TWF R-255 to SNAKO DME Fix, thence via (assigned transition).

JACKS TRANSITION (SNAKO1.JACKS): From over SNAKO DME Fix via 10 DME Arc and V269 to JACKS INT. Thence via (assigned route).

MURTH TRANSITION (SNAKO1.MURTH): From over SNAKO DME Fix via 10 DME Arc and V142 to MURTH INT. Thence via (assigned route).

ROGET TRANSITION (SNAKO1.ROGET): From over SNAKO DME Fix via 10 DME Arc and V253 to ROGET INT. Thence via (assigned route).

SAMAN TRANSITION (SNAKO1.SAMAN): From over SNAKO DME Fix via 10 DME Arc and V293 to SAMAN INT. Thence via (assigned route).

WODEN TRANSITION (SNAKO1.WODEN): From over SNAKO DME Fix via 10 DME Arc and V484 to WODEN INT. Thence via (assigned route).

SNAKO ONE DEPARTURE