

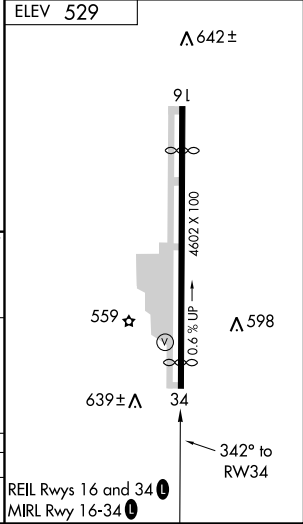
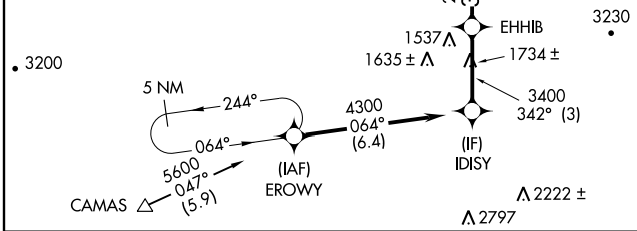
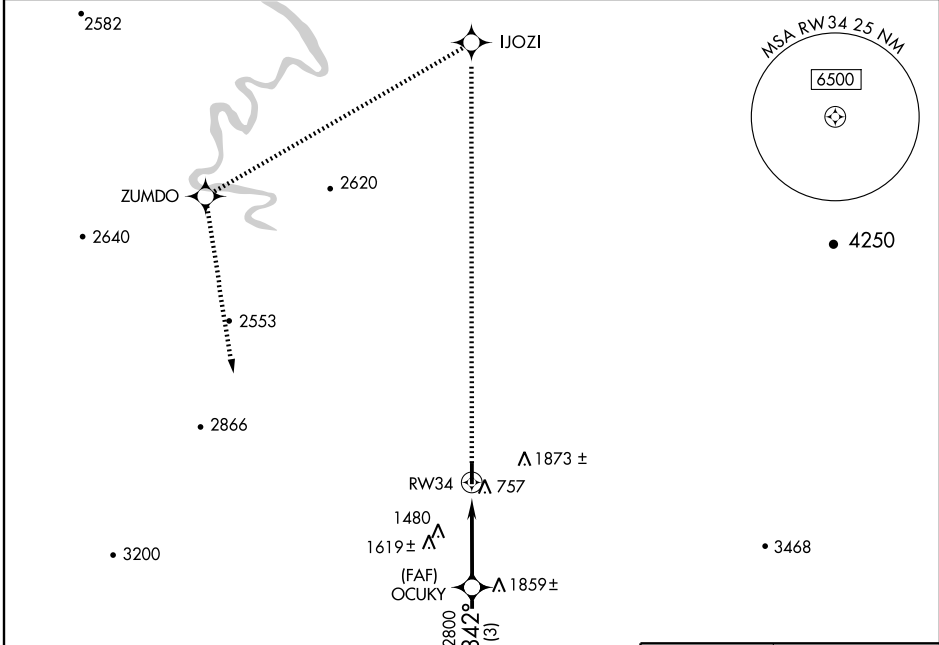
RNAV (GPS)-B
ROSEBURG RGNL (R.B.G)

APP CRS 342°	Rwy Idg TDZE Apt Elev	N/A N/A 529
------------------------	-----------------------------	--

⚠ Circling NA east of Rwy 16-34.
⚠ If local altimeter setting not received, use North Bend altimeter setting and increase all MDAs 520 feet.
DME/DME RNP -0.3 NA.

MISSED APPROACH: Climb to 5600 direct IJOZI and left turn via 222° track to ZUMDO and via 153° track to EROWY and hold.

ASOS 135.475	SEATTLE CENTER 121.4 239.0	UNICOM 122.8 (CTAF) 0
------------------------	--------------------------------------	---------------------------------



VGSI and descent angles not coincident	5600	IJOZI	ZUMDO	153° track	EROWY
IDISY			222° track		
Procedure Turn NA	4300	EHHIB	OCUKY	5.61° TCH 53	RW34
	342°	3400	2800		
	3 NM	3 NM	3.8 NM		

CATEGORY	A	B	C	D
CIRCLING	1700-1¼ 1171 (1200-1¼)	1700-1½ 1171 (1200-1½)	1700-3 1171 (1200-3)	1920-3 1391 (1400-3)

REIL Rwys 16 and 34 0
MRL Rwy 16-34 0

NW-1, 11 MAR 2010 to 08 APR 2010

NW-1, 11 MAR 2010 to 08 APR 2010