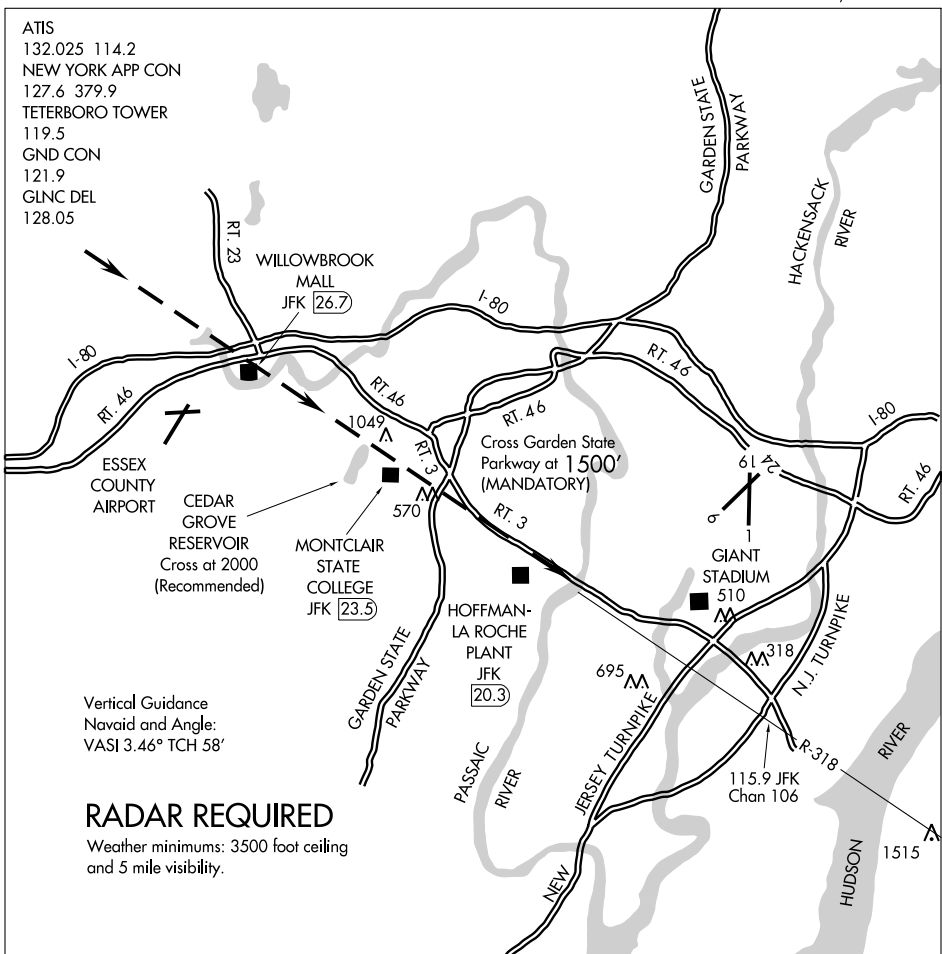


CEDAR GROVE VISUAL RWY 1



NE-2, 11 MAR 2010 to 08 APR 2010

NE-2, 11 MAR 2010 to 08 APR 2010

1 NM	2	3	4	5	6	7	8	9	10	11	12	13	14	15	16
------	---	---	---	---	---	---	---	---	----	----	----	----	----	----	----

When cleared for a Cedar Grove Visual to Rwy 1, descend after the Willowbrook Mall so as to cross the Cedar Grove Reservoir at 2000' (recommended), and the Garden State Parkway at 1500' (mandatory). Follow Rt. 3 until Giant Stadium, then commence a turn and descent for Rwy 1. Use caution for antenna farms northeast of Cedar Grove Reservoir and southeast of Giant Stadium.

CEDAR GROVE VISUAL RWY 1