

SMYRNA, TENNESSEE

AL-895 (FAA)

APP CRS	Rwy Idg	8048
141°	TDZE	543
	Apt Elev	543

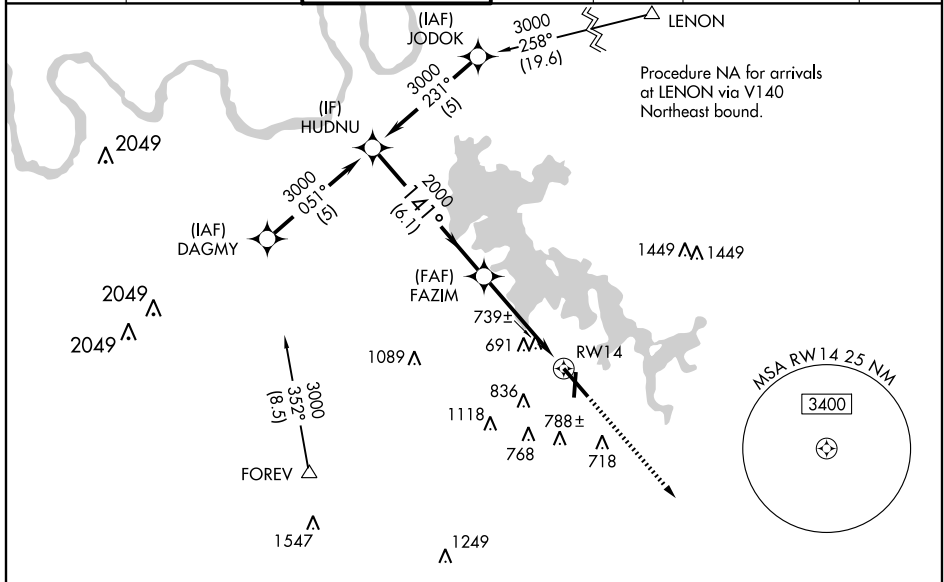
RNAV (GPS) RWY 14

SMYRNA (MQY)

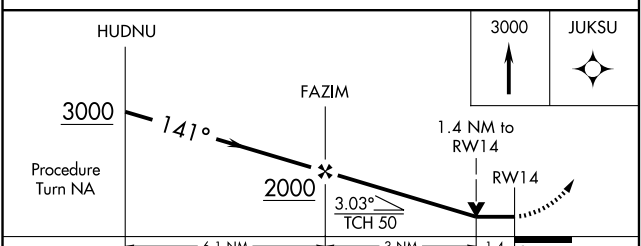
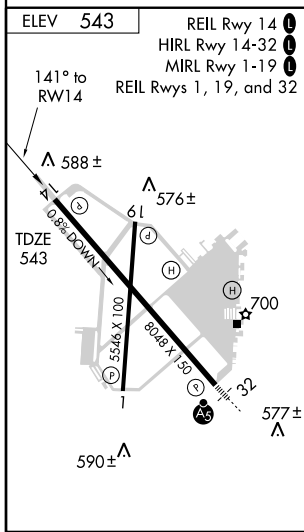
⚠ DME/DME RNP-0.3 NA. Visibility reduction by helicopters NA. When local altimeter setting not received, use Nashville Intl altimeter setting and increase all MDA 40 feet; **⚠** increase LNAV Cat C and D visibilities ¼ mile and Circling Cat C visibility ½ mile. VDP NA when using Nashville Intl altimeter setting.

MISSED APPROACH: Climb to 3000 direct JKUSU and hold.

ASOS 119.125	NASHVILLE APP CON 118.4 360.7	SMYRNA TOWER ★ 118.5 (CTAF) 0 233.1	GND CON 121.4	CLNC DEL 121.4	NASHVILLE CLNC DEL 121.7 (When tower closed)	UNICOM 122.95
------------------------	---	---	-------------------------	--------------------------	---	-------------------------



Procedure NA for arrivals at FOREV via V49 Southwest bound.



CATEGORY	A	B	C	D
LNAV MDA	1040-1	497 (500-1)	1040-1¼ 497 (500-1¼)	1040-1½ 497 (500-1½)
CIRCLING	1080-1	537 (600-1)	1120-1½ 577 (600-1½)	1160-2 617 (700-2)

SMYRNA, TENNESSEE
Orig 09351

36°01'N - 86°31'W

RNAV (GPS) RWY 14

SE-1, 11 MAR 2010 to 08 APR 2010

SE-1, 11 MAR 2010 to 08 APR 2010