

HOLDENVILLE, OKLAHOMA

AL-900 (FAA)

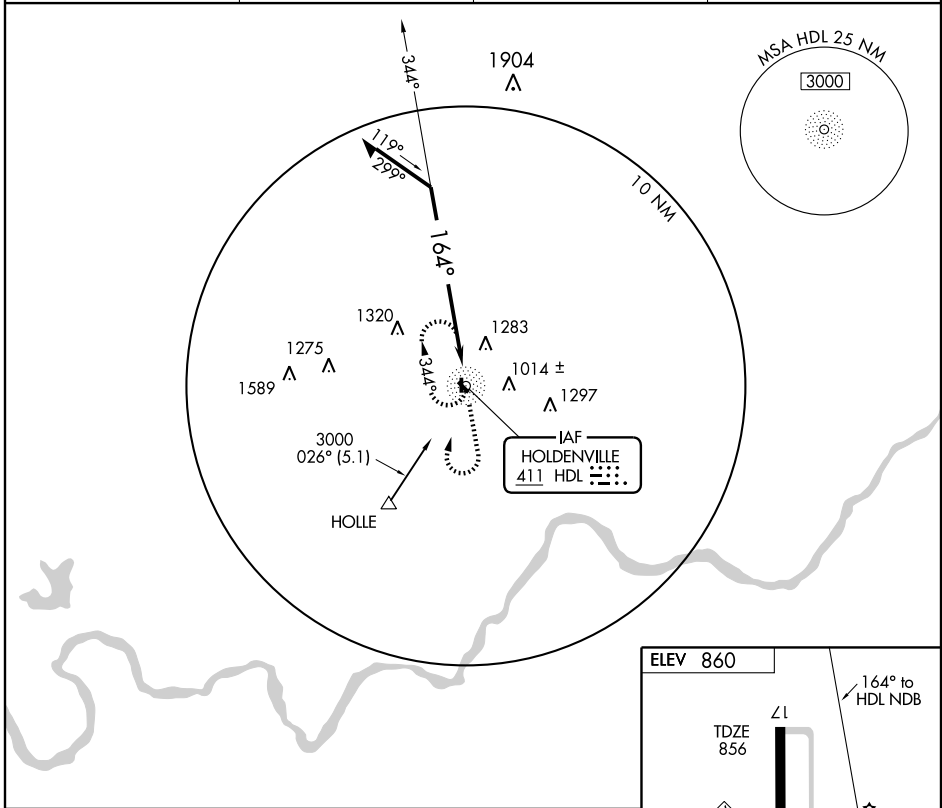
# NDB RWY 17

HOLDENVILLE MUNI (F99)

NDB HDL <b>411</b>	APP CRS <b>164°</b>	Rwy Idg TDZE Apt Elev	<b>3251</b> <b>856</b> <b>860</b>
-----------------------	------------------------	-----------------------------	---

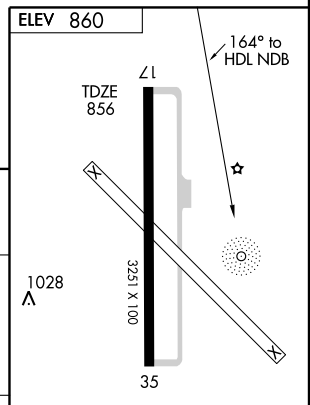
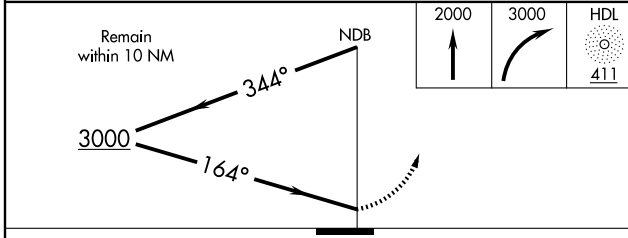
<b>▲</b> NA Use McAlester altimeter setting.	MISSED APPROACH: Climb to 2000 then climbing right turn to 3000 direct HDL NDB and hold.		
--	--	--	--

ADA MUNI AWOS-3 <b>118.725</b>	McALESTER REGIONAL ASOS <b>135.125</b>	FORT WORTH CENTER <b>132.2 338.35</b>	UNICOM <b>122.8</b> (CTAF)
-----------------------------------	---	--	-------------------------------



SC-1, 11 MAR 2010 to 08 APR 2010

SC-1, 11 MAR 2010 to 08 APR 2010



CATEGORY	A	B	C	D
S-17	1780-1¼ 918 (1000-1¼)		1780-2¾ 918 (1000-2¾)	NA
CIRCLING	1780-1¼ 920 (1000-1¼)		1780-2¾ 920 (1000-2¾)	NA

MIRL Rwy 17-35

Knots	60	90	120	150	180
Min:Sec					

HOLDENVILLE, OKLAHOMA  
Amdt 4A 08269

35° 05' N-96° 25' W

# HOLDENVILLE MUNI (F99)

## NDB RWY 17