

VOR RWY 5

HOT SPRINGS/MEMORIAL FIELD (HOT)

VOR/DME HOT 110.0 Chan 37	APP CRS 058°	Rwy Idg 6595 TDZE 515 Apt Elev 540
---	------------------------	---

⚠ Circling not authorized northwest of Rwy 5-23. Obtain local altimeter setting on CTAF; when not received, use Little Rock altimeter setting. Inoperative table does not apply to Cat. A. For inoperative MALSR, increase S-5 Cat. B visibility to 1½.

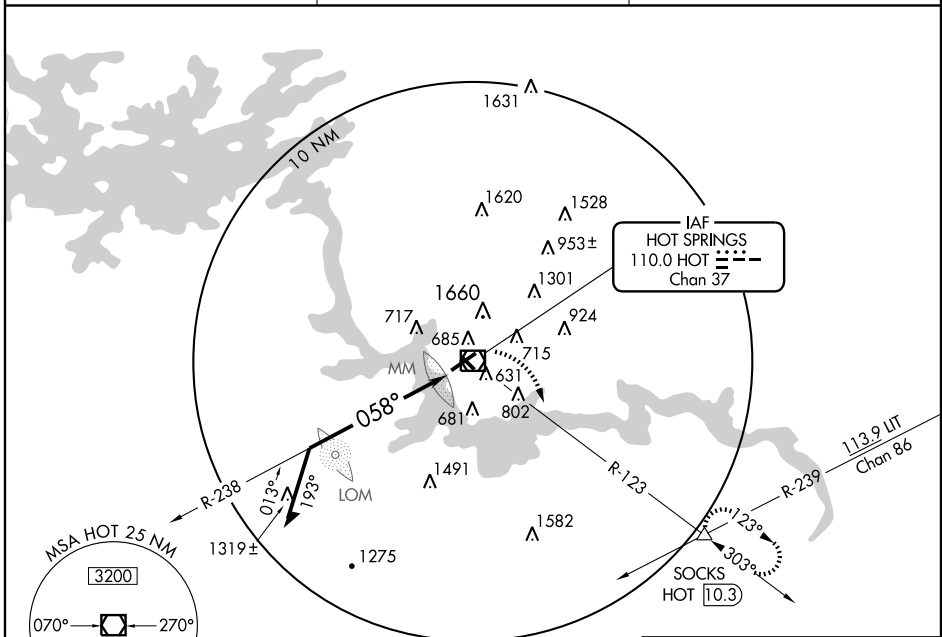


MISSED APPROACH: Climbing right turn to 3000 via HOT R-123 to SOCKS Int/HOT 10.3 DME and hold.

ASOS
119.925

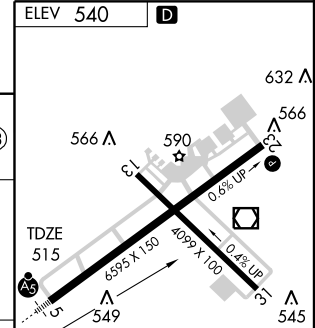
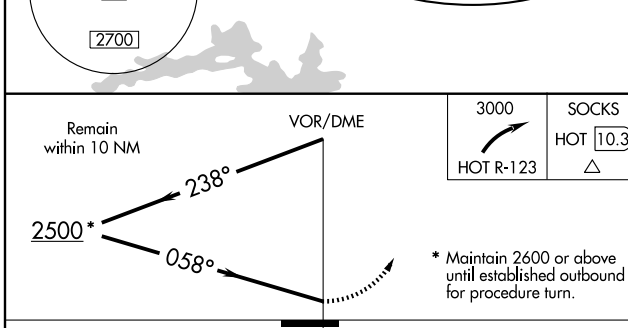
MEMPHIS CENTER
128.475 377.15

UNICOM
123.0 (CTAF) 0



SC-1, 19 NOV 2009 to 17 DEC 2009

SC-1, 19 NOV 2009 to 17 DEC 2009



CATEGORY	A	B	C	D
S-5	1620-1¼	1105 (1100-1¼)	1620-2½	1105 (1100-2½)
CIRCLING	1620-1¼	1620-1½	1620-3	1080 (1100-3)
	1080 (1100-1¼)	1080 (1100-1½)		
LITTLE ROCK ALTIMETER SETTING MINIMUMS				
S-5	1780-1¼	1265 (1300-1¼)	1780-2½	1265 (1300-2½)
CIRCLING	1780-1¼	1780-1½	1780-3	1240 (1300-3)
	1240 (1300-1¼)	1240 (1300-1½)		

HIRL Rwy 5-23 **0**
 MIRL Rwy 13-31 **0**
 REIL Rwy 13 **0**