

ZAPLE VOR RWY 5

HOT SPRINGS/MEMORIAL FIELD (HOT)

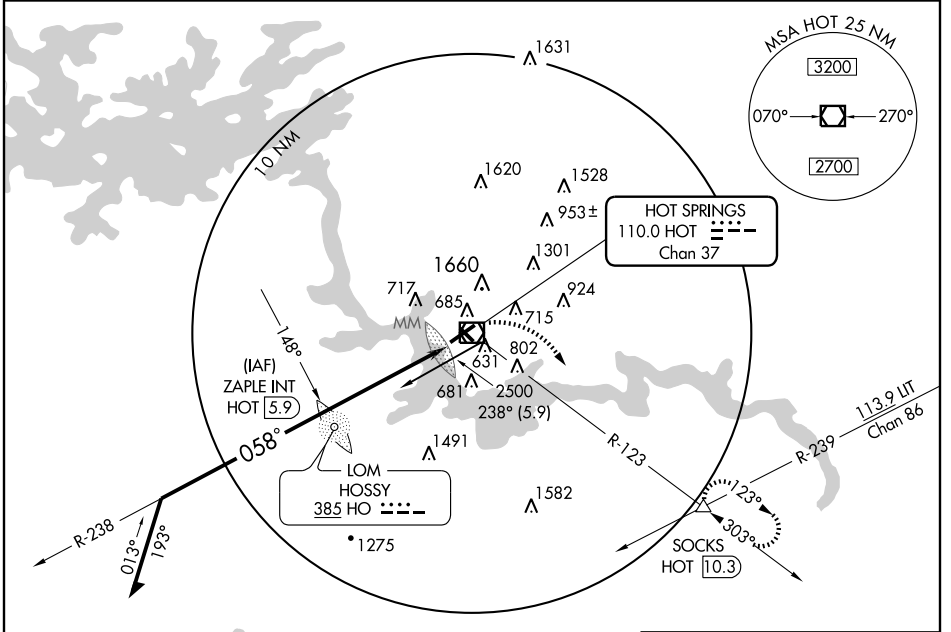
| | | |
|---|------------------------|---|
| VOR/DME HOT 110.0 Chan 37 | APP CRS 058° | Rwy Idg 6595 TDZE 515 Apt Elev 540 |
|---|------------------------|---|

⚠ Circling not authorized northwest of Rwy 5-23. Obtain local altimeter setting on CTAF; when not received, use Little Rock altimeter setting. Memorial Field altimeter setting minimums: for inoperative MALSR, increase S-5 Cat. D visibility to 1¼.

MALSR
AS

MISSED APPROACH: Climb right turn to 3000 via HOT R-123 to SOCKS Int/HOT 10.3 DME and hold.

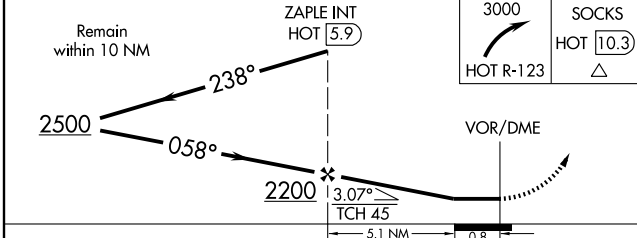
| | | |
|------------------------|---|---------------------------------|
| ASOS 119.925 | MEMPHIS CENTER 128.475 377.15 | UNICOM 123.0 (CTAF) 0 |
|------------------------|---|---------------------------------|



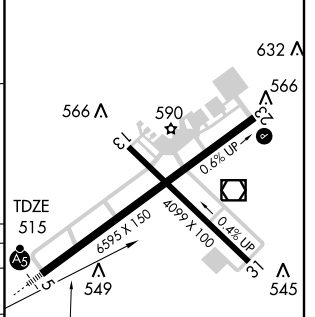
SC-1, 19 NOV 2009 to 17 DEC 2009

SC-1, 19 NOV 2009 to 17 DEC 2009

| | | | |
|---------------------|-------------------|------|----------------|
| Remain within 10 NM | ZAPLE INT HOT 5.9 | 3000 | SOCKS HOT 10.3 |
|---------------------|-------------------|------|----------------|



| | |
|----------|---|
| ELEV 540 | D |
|----------|---|



| CATEGORY | A | B | C | D |
|--|--------------------|---|----------------------|----------------------|
| S-5 | 940-½ 425 (500-½) | | 940-¾ 425 (500-¾) | 940-1 425 (500-1) |
| CIRCLING | 1060-1 520 (600-1) | | 1060-1½ 520 (600-1½) | 1120-2 580 (600-2) |
| LITTLE ROCK ALTIMETER SETTING MINIMUMS | | | | |
| S-5 | 1080-½ 565 (600-½) | | 1080-1 565 (600-1) | 1080-1¼ 565 (600-1¼) |
| CIRCLING | 1200-1 660 (700-1) | | 1200-1¾ 660 (700-1¾) | 1260-2¼ 720 (800-2¼) |

TDZE 515
058° to HOT VOR/DME
HIRL Rwy 5-23 0
MIRL Rwy 13-31 0
REIL Rwy 13 0