

WAAS CH 78099 W15A	APP CRS 150°	Rwy Idg TDZE 1000 1015 Apt Elev 1015
--	------------------------	--

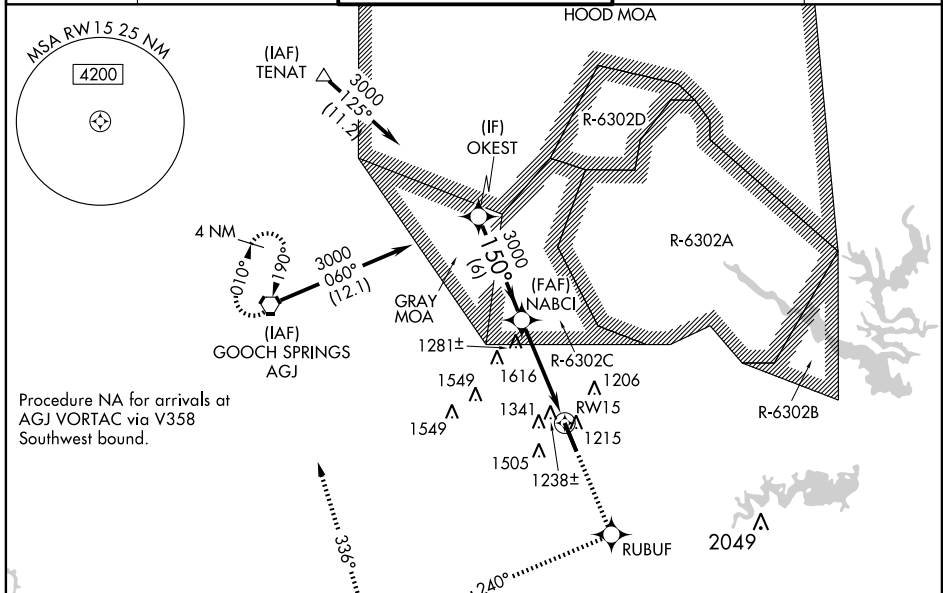
RNAV (GPS) RWY 15

FORT HOOD/KILLEEN/ ROBERT GRAY AAF (GRK)

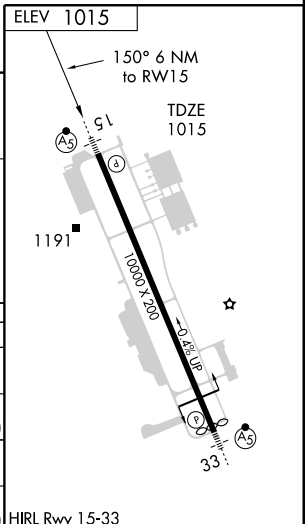
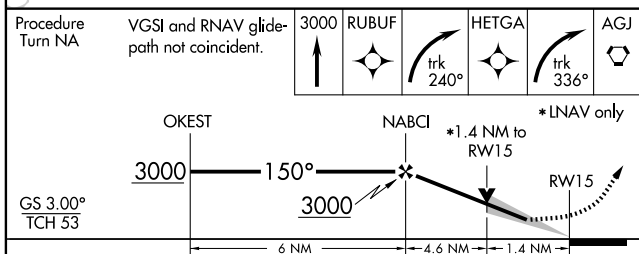
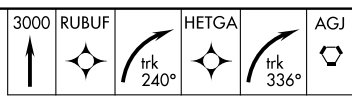
PAR/ASR Circling NA W of Rwy 15-33. For uncompensated Baro-VNAV systems, LNAV/VNAV NA below -17°C (2°F) or above 47°C (116°F). Inoperative table does not apply to LPV all Cats, and LNAV Cats A/B. DME/DME RNP-0.3 NA. For inoperative MALSR, increase LNAV/VNAV Cat E visibility ½ mile and LNAV Cat E visibility ½ mile.

MALSR MISSED APPROACH: Climb to 3000 direct RUBUF and right turn via track 240° to HETGA and right turn via track 336° to AGJ VORTAC and hold.

ATIS 124.9	GRAY APP CON 120.075 323.15	GRAY TOWER 120.75 285.5	GND CON 126.2 279.5	CLNC DEL 121.8 251.1
----------------------	---------------------------------------	-----------------------------------	-------------------------------	--------------------------------



Procedure Turn NA VGSI and RNAV glide-path not coincident.



CATEGORY	A	B	C	D	E
LPV DA	1271/24 256 (300-½)				
LNAV/VNAV DA	1547/60		532 (600-1¼)		1547-1½ 532 (600-1½)
LNAV MDA	1540/24	525 (600-½)	1540/50 525 (600-1)	1540/60	525 (600-1¼)
CIRCLING	1540-1	525 (600-1)	1560-1½ 545 (600-1½)	1580-2 565 (600-2)	1740-2½ 725 (800-2½)

SC-3, 11 MAR 2010 to 08 APR 2010

SC-3, 11 MAR 2010 to 08 APR 2010