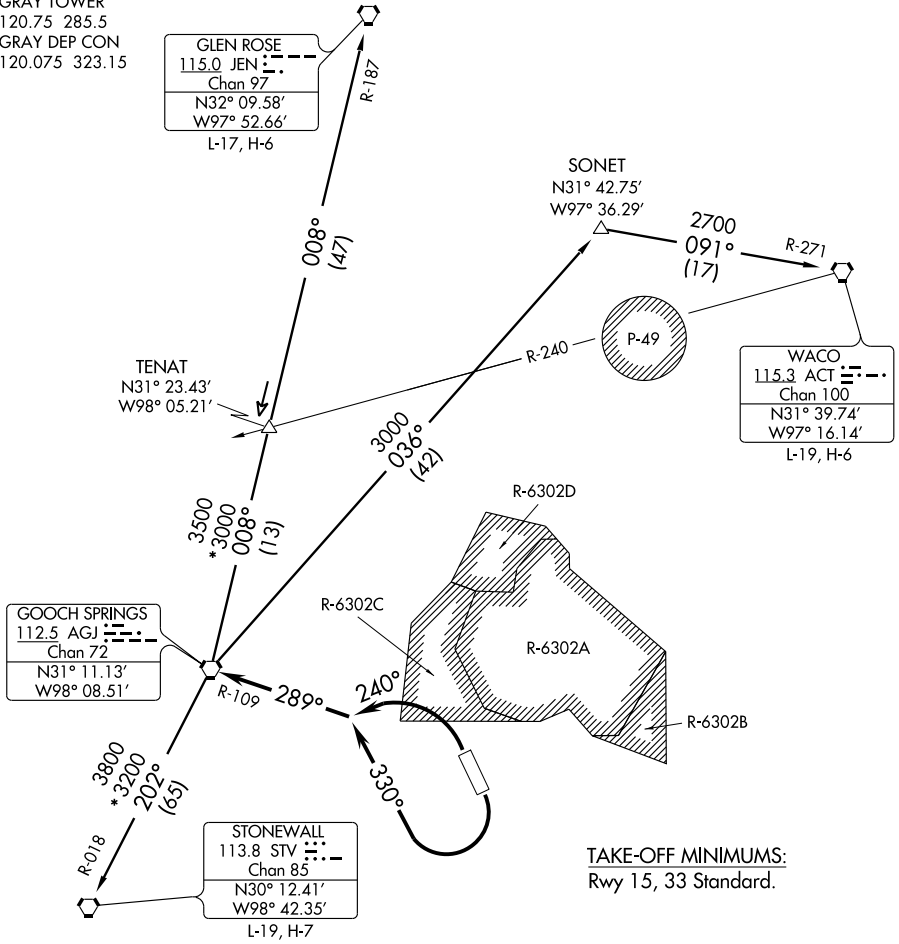


LAMPS FOUR DEPARTURE

ATIS 124.9
CLNC DEL
121.8 251.1
GND CON
126.2 279.5
GRAY TOWER
120.75 285.5
GRAY DEP CON
120.075 323.15

NOTE: RADAR Required.
NOTE: MRA at TENAT Int 4000 for Non-DME aircraft.



TAKE-OFF MINIMUMS:
Rwy 15, 33 Standard.

TAKE-OFF OBSTACLES:

Rwy 33, Pole 974' from DER, 746' left of centerline, 35' AGL/1050' MSL.
Pole 1121' from DER, 746' left of centerline, 33' AGL/1048' MSL.

(NARRATIVE ON FOLLOWING PAGE)

NOTE: Chart not to scale.

SC-3, 11 MAR 2010 to 08 APR 2010

SC-3, 11 MAR 2010 to 08 APR 2010